



# Printing Configuration

---

<b>1</b>	<b>PRINTER PREPARATIONS.....</b>	<b>3</b>
1.1	PRINTER SELECTION .....	3
1.2	PRINTER SPECIFICATIONS .....	3
1.3	DRIVER.....	4
<b>2</b>	<b>PRINTING PREFERENCES.....</b>	<b>5</b>
2.1	PAGE SETUP .....	5
2.2	GRAPHICS.....	8
2.3	STOCK .....	9
2.4	OPTIONS .....	10
<b>3</b>	<b>GLOBAL LABEL PRINTING .....</b>	<b>11</b>
3.1	GENERAL.....	11
3.2	LABEL SETTINGS .....	12
3.3	PROGRAM OPTIONS.....	19
3.4	PRINTING LABELS .....	20
3.5	GLP AUTO MODE .....	27
<b>4</b>	<b>LABELS .....</b>	<b>34</b>
4.1	CUTTING DATA .....	34
4.2	SNAP OFF .....	34
4.3	BIN .....	34
4.4	SECO STANDARD .....	34
4.5	TOOL LABEL .....	35
4.6	MILLING GRADE.....	35
4.7	DRILL .....	35
4.8	SECOLOR .....	36
4.9	SNAP OFF (W) .....	36
4.10	WRAPAROUND STANDARD .....	37
4.11	WRAPAROUND SECOLOR.....	38
4.12	WRAPAROUND SECOMILL .....	38
4.13	SECO TAP SINGLE - 02892148.....	39
4.14	SECO TAP 5-PACK SMALL - 02892143.....	39
4.15	SECO TAP 5-PACK MEDIUM - 02892144.....	39
4.16	SECO TAP 5-PACK LARGE - 02892146.....	39
4.17	FEEDMAX UNIVERSAL SINGLE - 02922405 .....	40
4.18	FEEDMAX UNIVERSAL SMALL - 02922406 .....	40
4.19	FEEDMAX UNIVERSAL MEDIUM - 02922407 .....	40
4.20	FEEDMAX UNIVERSAL LARGE - 02922410 .....	40
4.21	NIAGARA.....	41
4.22	DRILL SMALL .....	41
4.23	TOOL SMALL .....	41
4.24	TOOL LARGE .....	41
4.25	JABRO.....	42
4.26	FREE TEXT .....	42
<b>5</b>	<b>TROUBLESHOOTING.....</b>	<b>43</b>

5.1	LABEL IS SHIFTED VERTICALLY .....	43
5.2	MANUAL UPDATE .....	43
<b>6</b>	<b>VERSION CHANGES .....</b>	<b>44</b>

## 1 Printer Preparations

It is possible to print the Seco labels with printers from other brands than Intermec, but since these are the printer we use internally we support the installation and use of Intermec printers. This means that installation and use of other printers must be handled without help from Seco Tools.

If you are using Intermec see this section to pick the appropriate model and latest driver, and the next section to set up the printer driver.

### 1.1 Printer selection

Label	Printer
<b>Seco</b>	Intermec EasyCoder PM4i, PX4i, PM43, PM43c
<b>Secolor</b>	Intermec EasyCoder PM4i, PX4i, PM43, PM43c
<b>SecoMill</b>	Intermec EasyCoder PM4i, PX4i, PM43, PM43c
<b>Tool</b>	Intermec EasyCoder PM4i, PX4i, PM43, PM43c
<b>Drill</b>	Intermec EasyCoder PM4i, PX4i, PM43, PM43c
<b>Snap-off(W)</b>	Intermec EasyCoder PX6i
<b>Jabro</b>	Intermec EasyCoder PM4i, PX4i, PM43, PM43c
<b>Wraparound</b>	Intermec EasyCoder PX6i
<b>Cuttingdata 6x3</b>	Intermec EasyCoder PM4i, PX4i, PM43, PM43c
<b>Hoffman</b>	Intermec EasyCoder PM4i, PX4i, PM43, PM43c
<b>Wise Colli ID</b>	Intermec EasyCoder PM4i, PX4i, PM43, PM43c
<b>Seco Tap Single</b>	Intermec EasyCoder PX6i
<b>Seco Tap 5-pack</b>	Intermec EasyCoder PM4i, PX4i, PM43, PM43c
<b>Feedmax Universal</b>	Intermec EasyCoder PM4i, PX4i, PM43, PM43c
<b>Niagara Label</b>	Intermec EasyCoder PM4i, PX4i, PM43, PM43c
<b>Drill Small</b>	Intermec EasyCoder PM4i, PX4i, PM43, PM43c
<b>Tool Small</b>	Intermec EasyCoder PM4i, PX4i, PM43, PM43c
<b>Tool Large</b>	Intermec EasyCoder PM4i, PX4i, PM43, PM43c
<b>Jabro</b>	Intermec EasyCoder PM4i, PX4i, PM43, PM43c
<b>Free Text</b>	Intermec EasyCoder PM4i, PX4i, PM43, PM43c

### 1.2 Printer Specifications

If a new printer needs to be bought, make sure it has the following specifications:

- Resolution: 300 dpi

More Printer information:

PX4i & PX6i: <https://www.honeywellaidc.com/-/media/en/files-public/technical-publications/printers/px6i-px4i/px4i%20and%20px6i%20high%20performance%20printer%20users%20manual%20pdf.pdf>  
PM43 & PM43c: <https://www.honeywellaidc.com/-/media/en/files-public/technical-publications/printers/pm43-pm23/935-046.pdf>

### 1.3 Driver

Download the latest driver.

Driver:

Go to <https://hsmftp.honeywell.com/>

Latest driver package is found at: Software>Printers>Printer Software and Drivers>Printer Drivers>Intermec Windows driver

Run the downloaded file to unpack the driver files.

Run the DriverWizard.exe file.

When installing, make sure you choose the correct printer, it should look like:

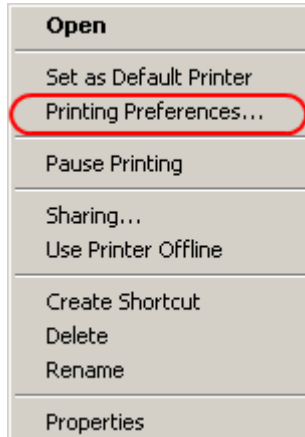
EasyCoder [printer model] (300 dpi) – DP

Ex: EasyCoder PX6i (300 dpi) – DP

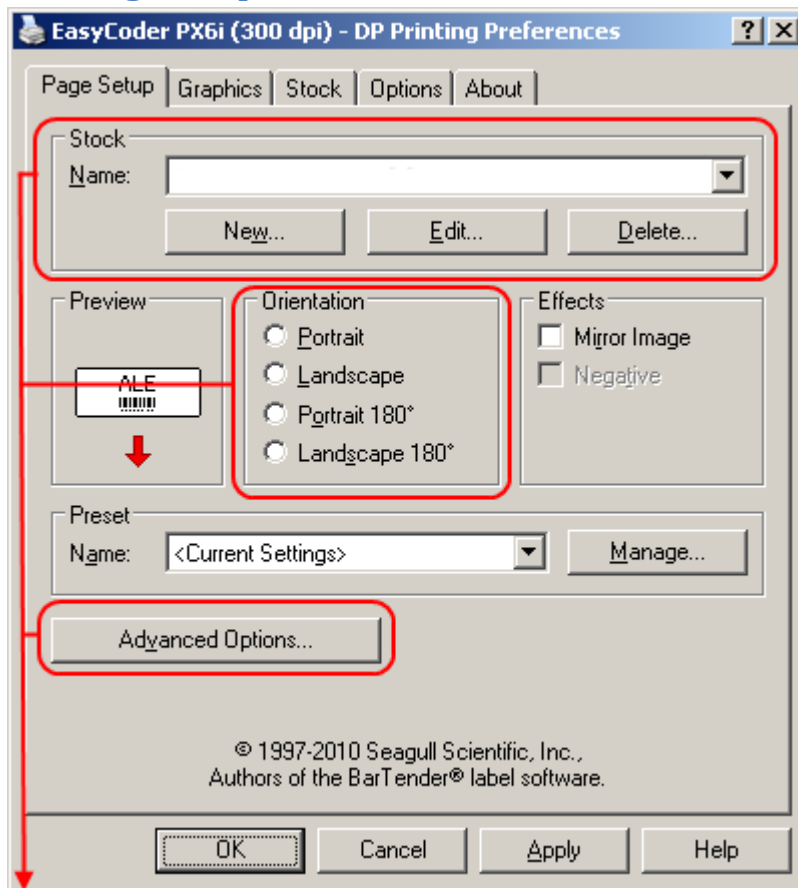
## 2 Printing Preferences

Go to Start->Settings->Printers and Faxes...

Right click on the printer and select "Printing Preferences..."



### 2.1 Page Setup



Set up according to tables below

### 2.1.1 Stock

Size of the label. Click “Create New” and set the width and height of the label used.

Label	MM		IN	
	Width	Height	Width	Height
Seco	72	29	2,83	1,14
Secolor	82	29	3,23	1,14
SecoMill	82	29	3,23	1,14
Tool	100	14	3,94	0,55
Drill	43	23	1,69	0,91
Snap-off(W)	143	88	5,63	3,46
Jabro	40	20	1,57	0,79
Wraparound	170	28	6,69	1,10
Cuttingdata 6x3	43	23	1,69	0,91
Hoffman	63	24	2,48	0,94
Wise Colli ID	110	162	4,33	6,38
Seco Tap Single	122	13	4,80	0,51
Seco Tap Small	78	54	3,07	2,13
Seco Tap Medium	94	76	3,70	2,99
Seco Tap Large	99	92	3,90	3,62
Feedmax Universal Single	19	68	2,68	0,75
Feedmax Universal Small	107	175	4,21	6,89
Feedmax Universal Medium	131	175	5,16	6,89
Feedmax Universal Large	161	175	6,34	6,89
Niagara Label	50	33	1,97	1,30
Drill Small	74	29	2,91	1,14
Tool Small	80	22	3,15	0,87
Tool Large	121	28	4,76	1,10
Jabro	40	20	1,57	0,79
Free Text	72	29	2,83	1,14

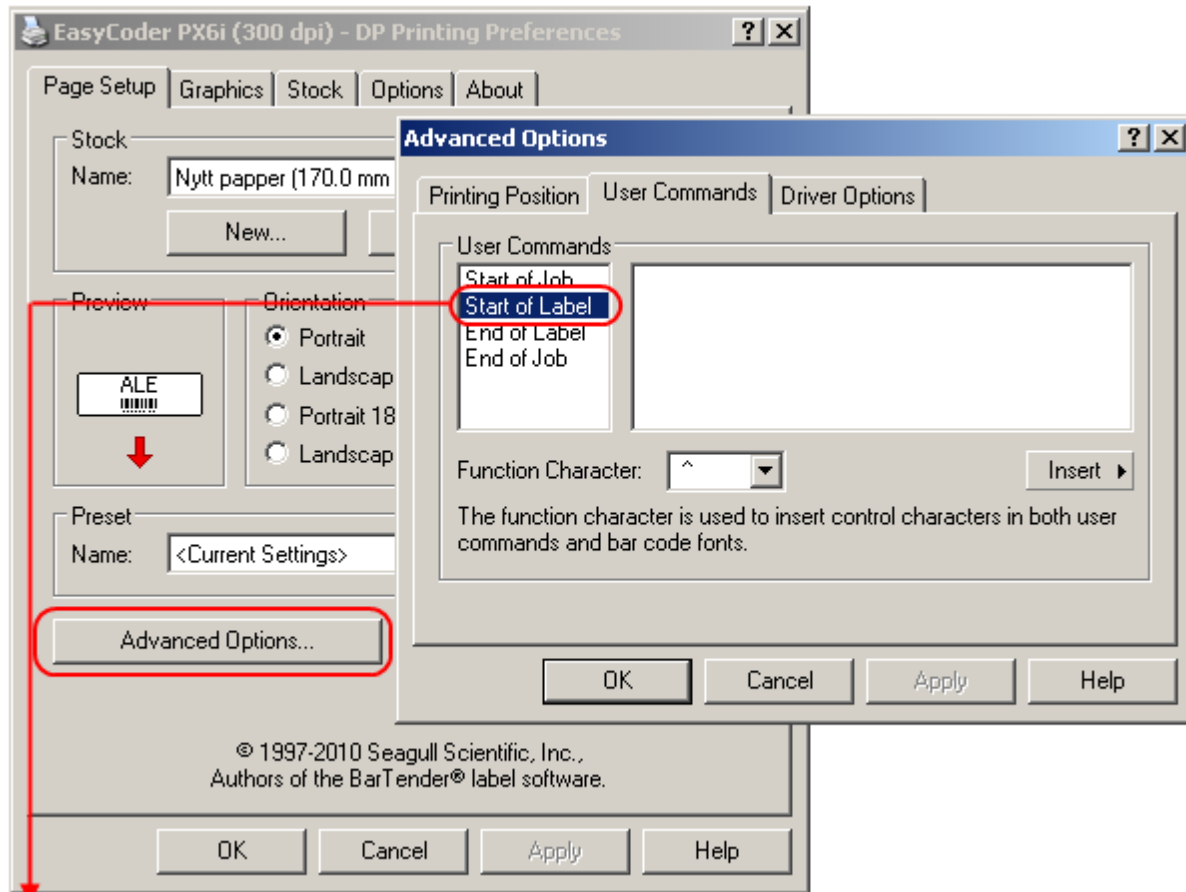
### 2.1.2 Orientation

Rotates the label printout.

Label	Orientation
Seco	Portrait
Secolor	Portrait
SecoMill	Portrait
Tool	Portrait
Drill	Portrait
Snap-off(W)	Landscape 180°
Jabro	Portrait
Wraparound	Portrait
Cuttingdata 6x3	Portrait
Hoffman	Portrait
Wise Colli ID	Portrait
Seco Tap	Portrait

<b>Feedmax Universal</b>	Portrait 180°
<b>Niagara Label</b>	Portrait
<b>Drill Small</b>	Landscape
<b>Tool Small</b>	Portrait
<b>Tool Large</b>	Portrait
<b>Jabro</b>	Portrait
<b>Free Text</b>	Portrait

### 2.1.3 Advanced Options



Set up according to table below

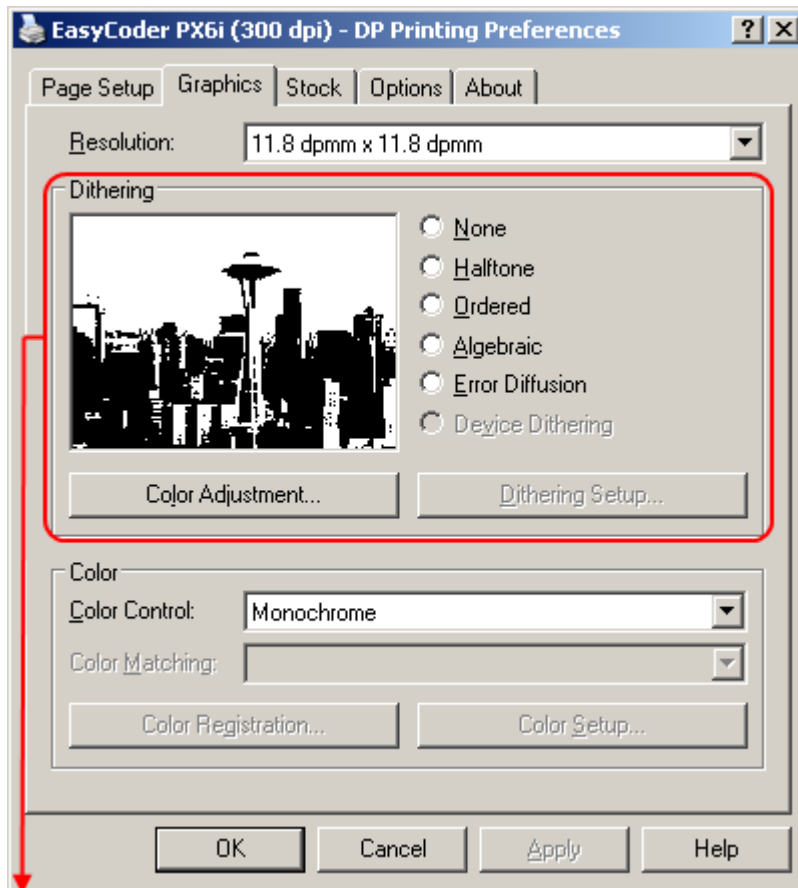
#### 2.1.3.1 User Commands

Used for sending extra commands to the printer.

Example of usage can be to start a program in the printer or to adjust the position of the printout in the X direction (MEDIA, MEDIA SIZE, XSTART=20).

Label	Start of Label
<b>Wraparound</b>	SETUP WRITE"SECOSET.UP" RUN "LABEL.PRG"

## 2.2 Graphics

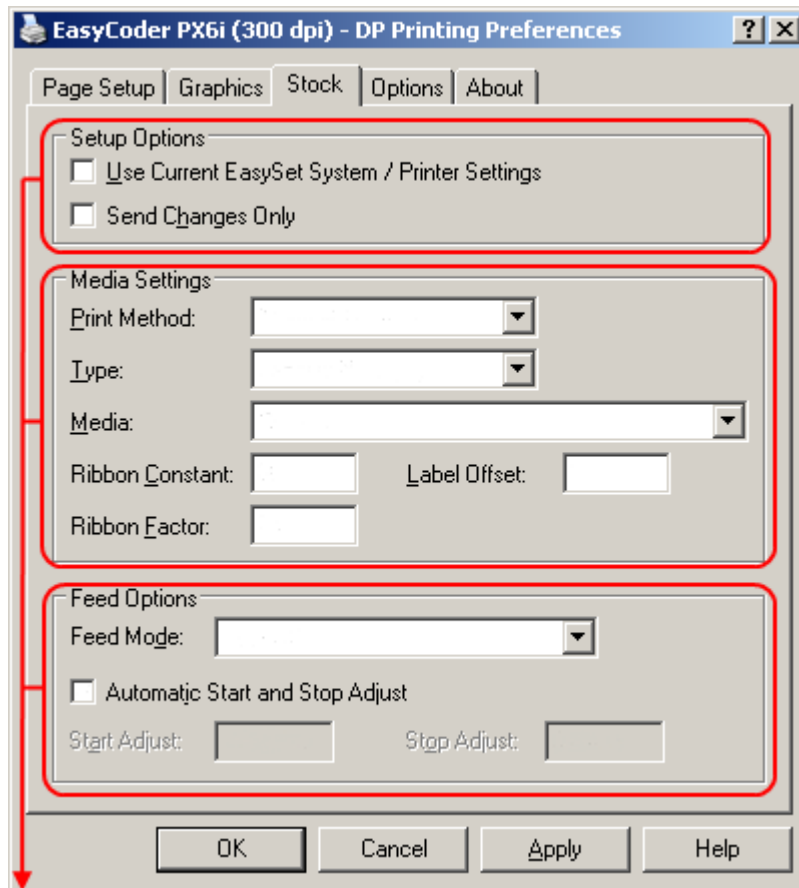


*Set up according to table below*

### 2.2.1 Dithering

Label	Dithering
All Labels	None

## 2.3 Stock



Set up according to tables below

### 2.3.1 Setup options

No matter what label is used, “Send changes only” should always be unchecked.

When unchecked, the driver will send all the settings to the printer every time a label is printed.

Label	Use current EasySet System / Printer Settings	Send changes only
All Labels	Unchecked	Unchecked

### 2.3.2 Media Settings

Thermal Transfer -> when black ribbon is used (default)

Direct Thermal -> when no black ribbon is used

Ribbon Constant & Factor = the amount of heat used when printing, high value = harder printout

Label	Print Method	Type	Ribbon Constant	Ribbon Factor
All Labels	Thermal Transfer	Label With Gaps	80	25

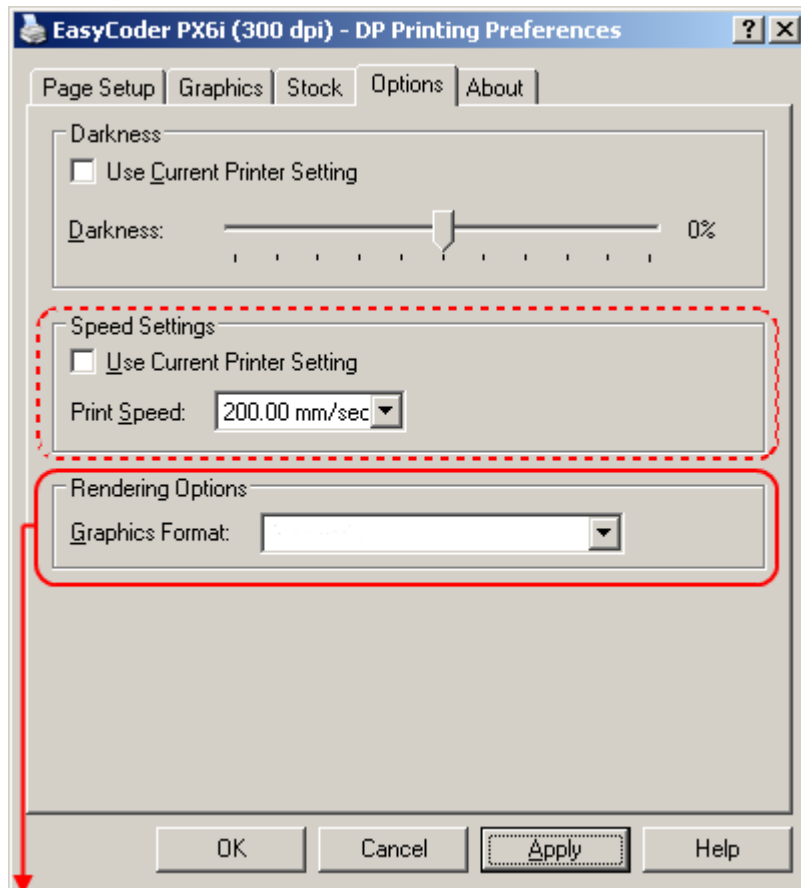
### 2.3.3 Feed options

Use automatic Start and Stop Adjust as default. If the label is shifted up or down, use manual values.

Note that Wraparound labels always need manual values.

Label	Feed Mode	Start Adjust	Stop Adjust
Wraparound	Tear Off	-26.5 mm	10.5 mm
All other Labels	Tear Off	Automatic	Automatic

## 2.4 Options



Set up according to table below

### 2.4.1 Speed Settings

Use default. If problem with printing quality, print speed can be lowered.

For example, if barcode is printed in “wrong” direction (ex. Snap-off) lower the print speed to get better quality.

### 2.4.2 Rendering Options

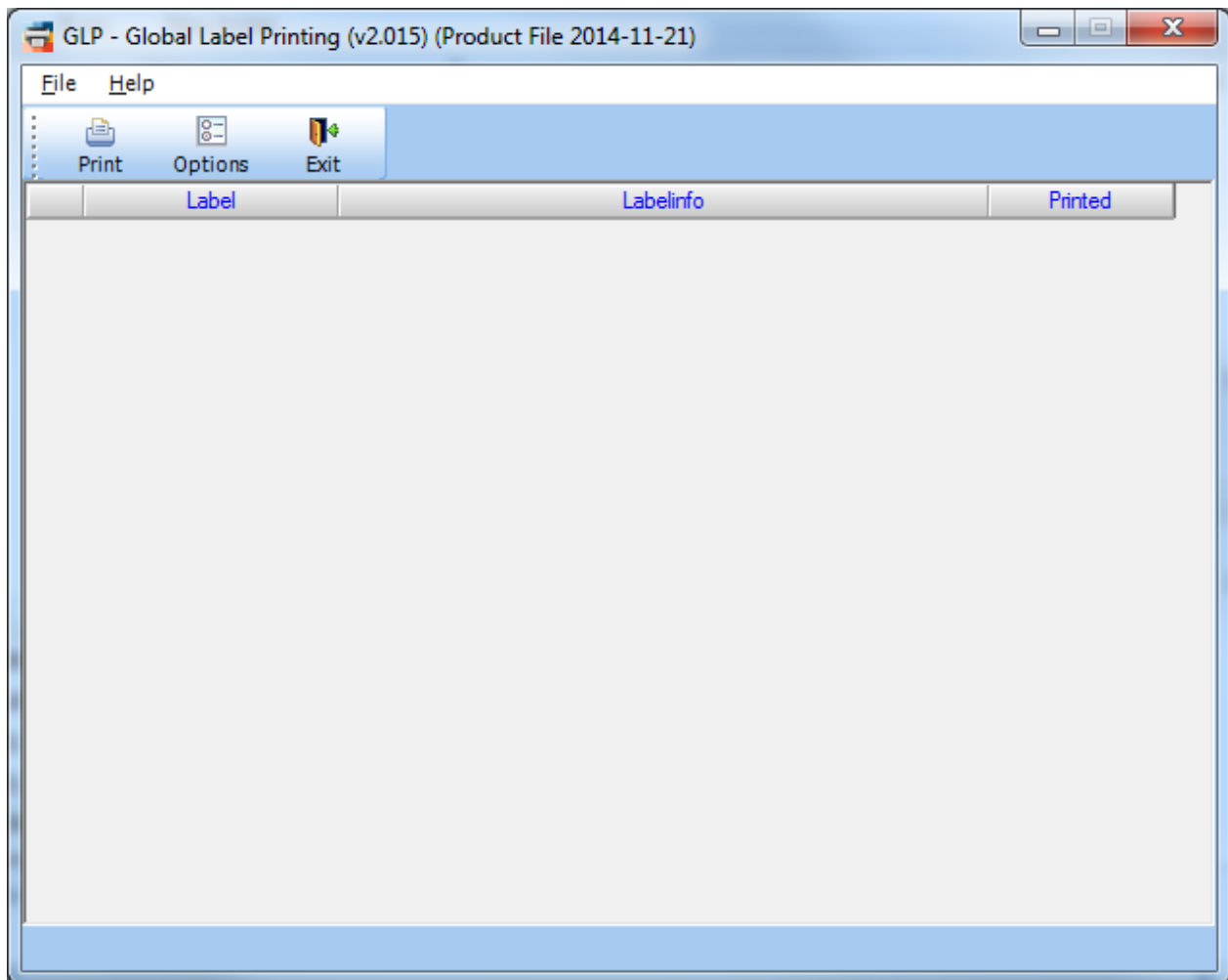
Graphics format = the way that the driver is sending images to the printer.

Label	Graphics format
Wraparound	PCX
All other Labels	Automatic

## 3 Global Label Printing

### 3.1 General

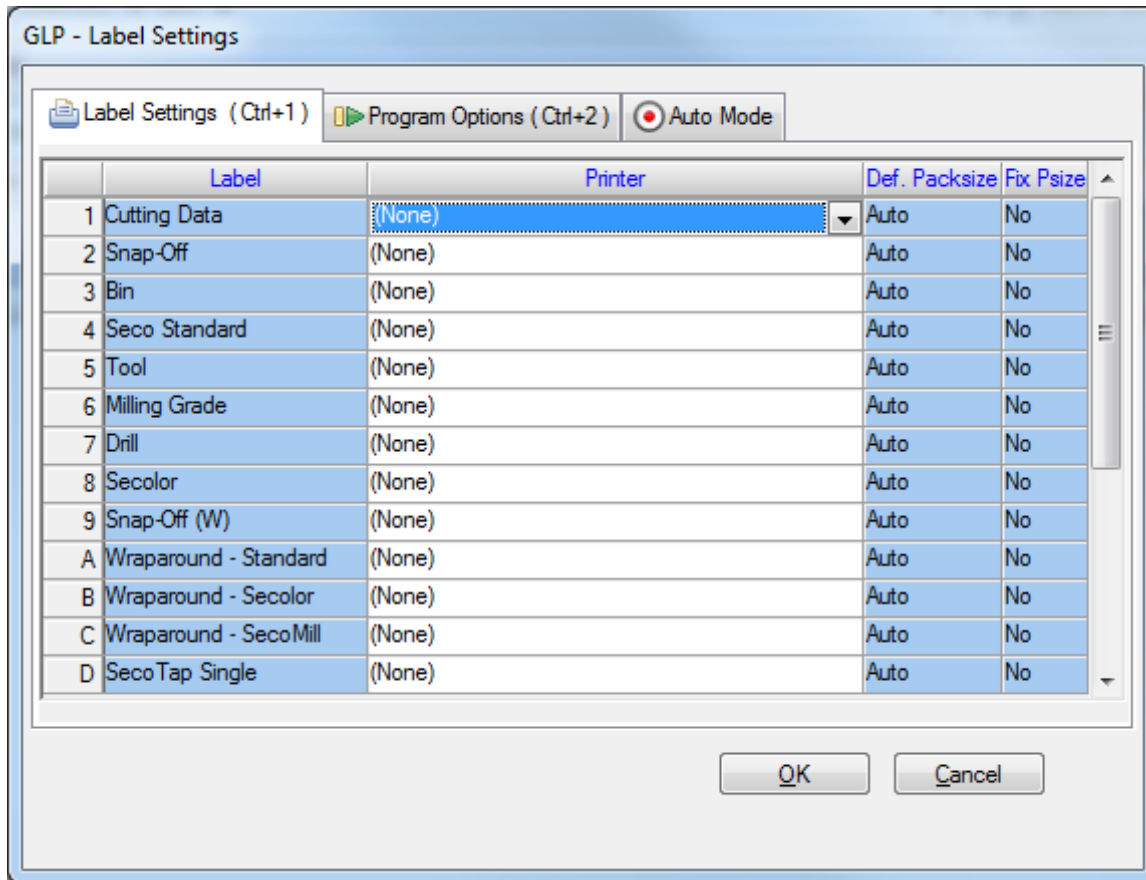
GLP is an application used for printing of Seco Tools specific labels. It is designed for an automatic update of product data needed for printing.



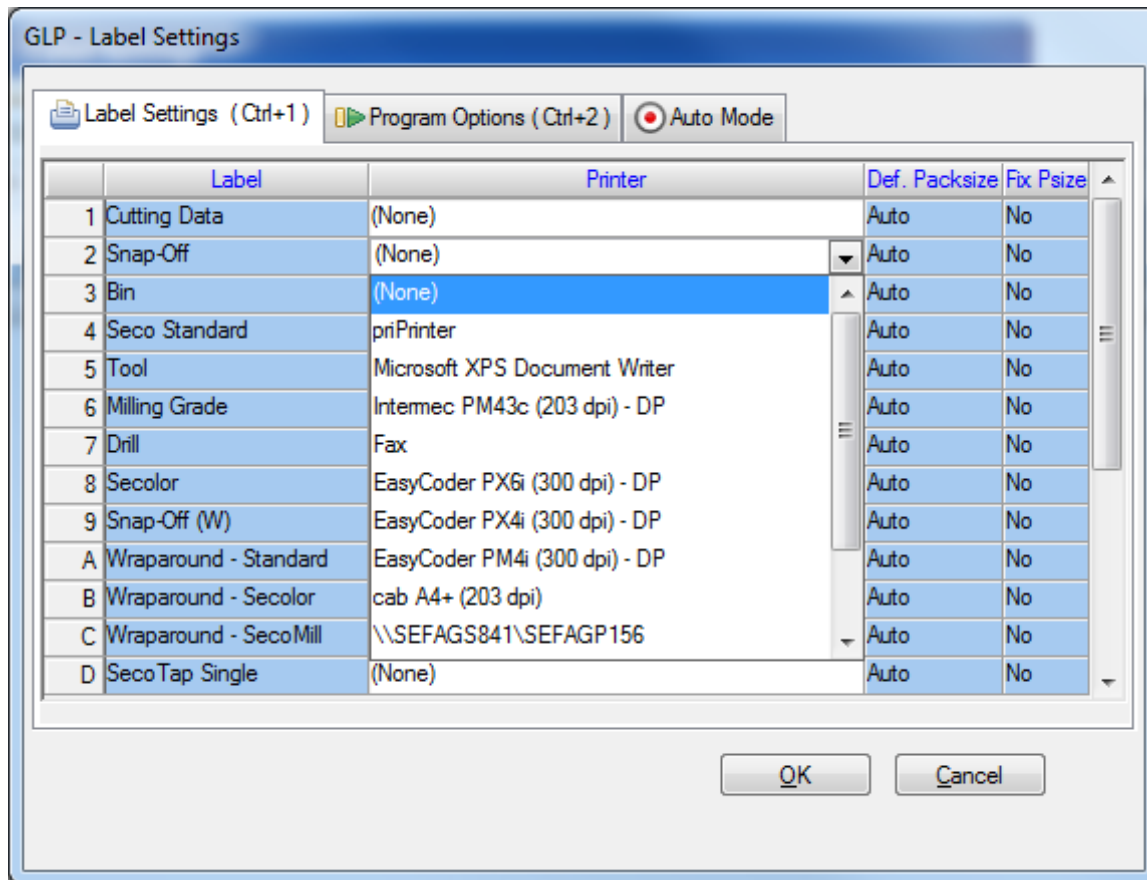
This is the screen shown when starting the application.

The first time it is started after install, the set up screen will automatically popup, see next chapter.

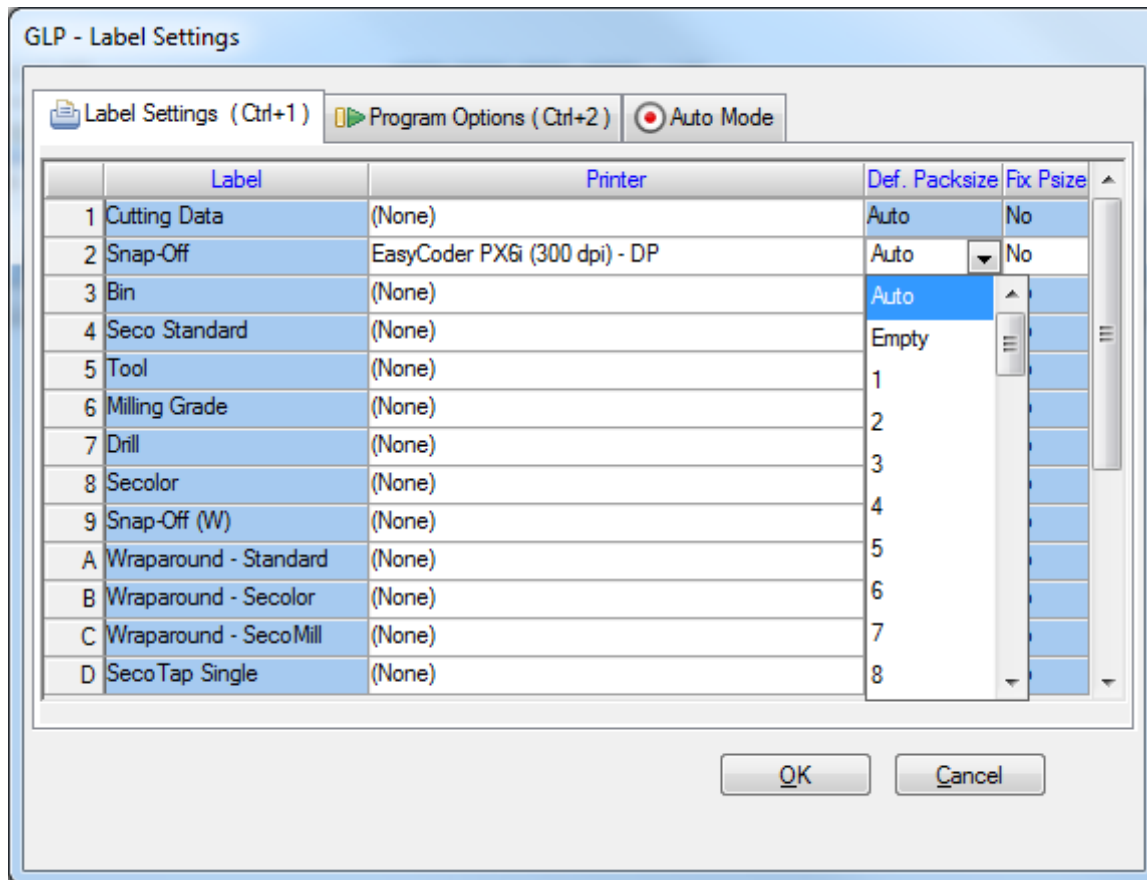
## 3.2 Label settings



The grid shows all labels available for printing.

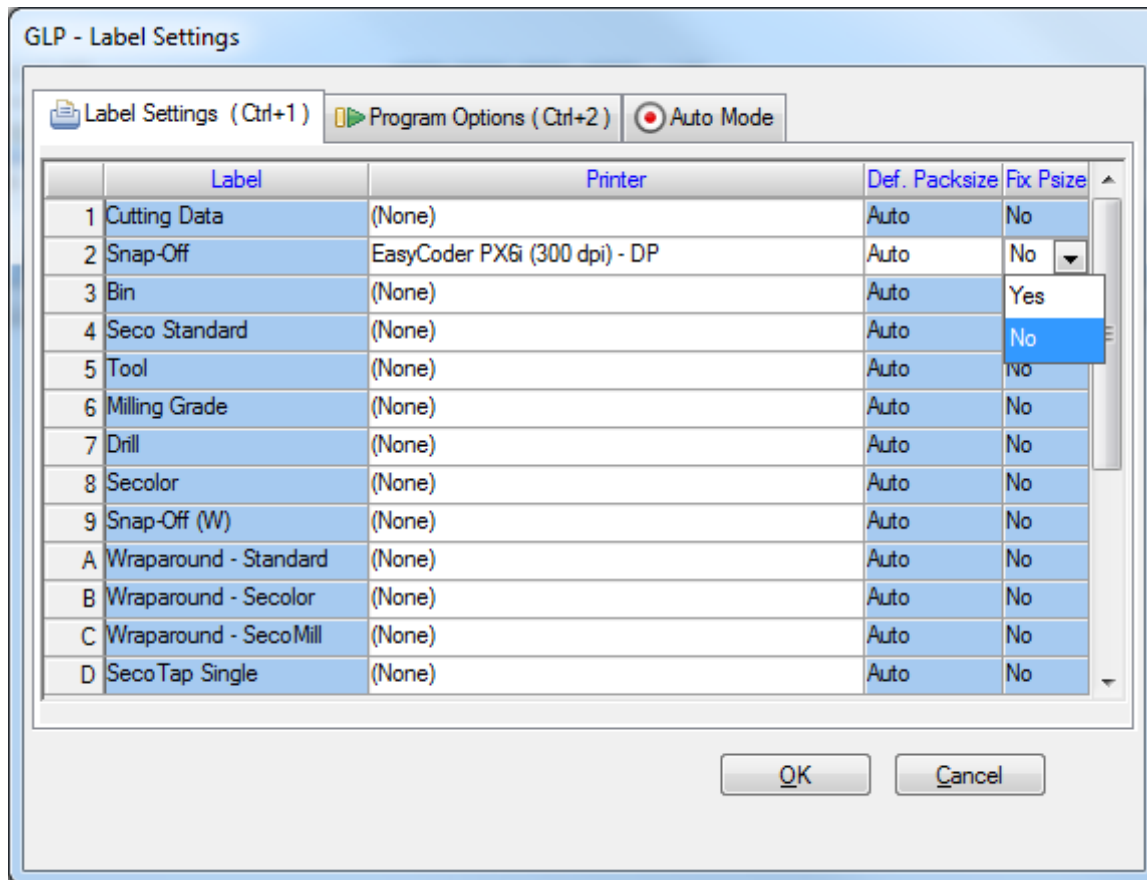


Select printer for the label(s) that should be printed



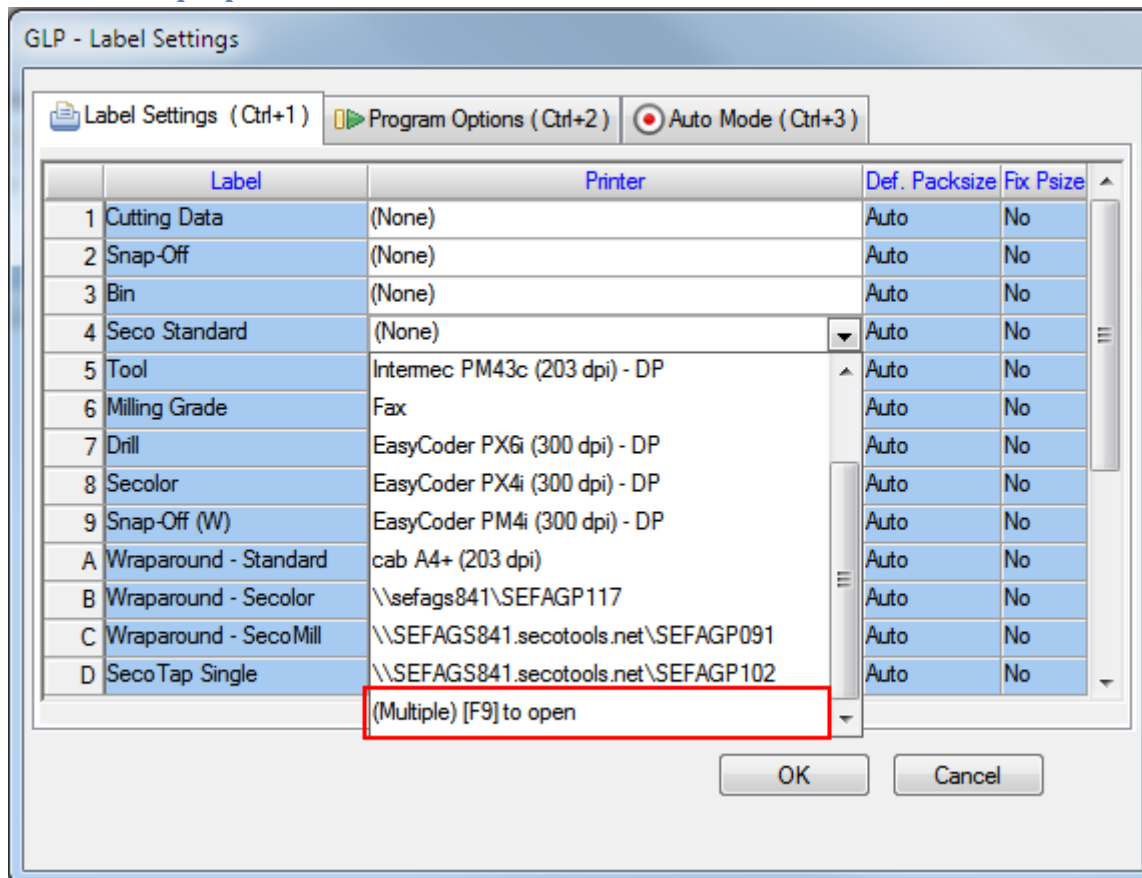
When a Printer has been chosen for a label it is also possible to set the Default Packsize for that label. “Auto” means that GLP will automatically set the packsize like before. “Empty” means that the packsize will be empty by default and the user will have to type it manually every time.

Please note that the packsize can still be changed when printing even if a default packsize has been chosen.

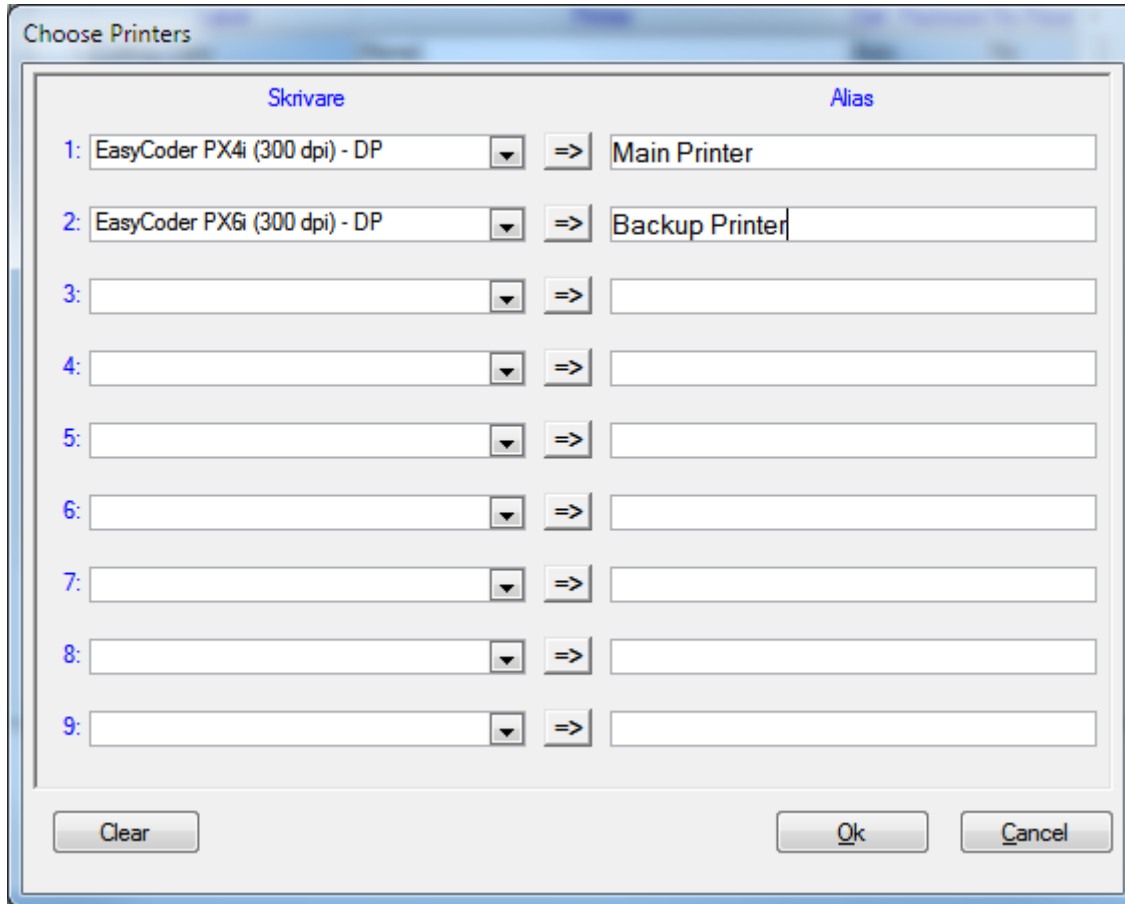


Fixed Packsize (Fix Psize) can be set to “Yes” if packsize in the printing window should be fixed and not possible to change. Default is “No”, meaning Packsize can be changed manually.

### 3.2.1 Multiple printers



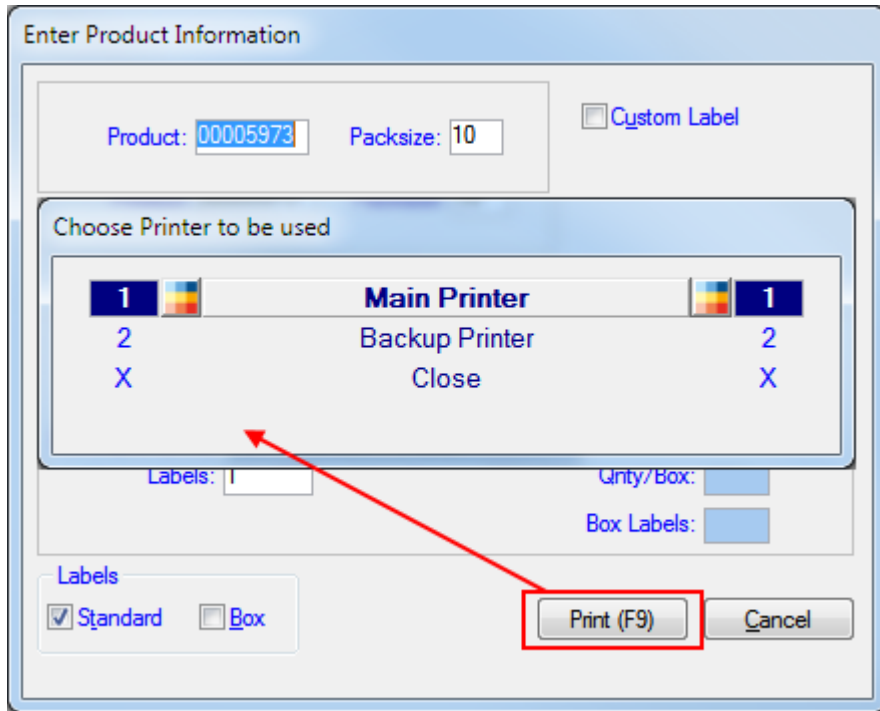
If you have more than one printer dedicated for the same label, it is possible to register multiple printers for that label. In the printer list, scroll to the bottom and choose (Multiple).



	Skrivare		Alias
1:	EasyCoder PX4i (300 dpi) - DP	=>	Main Printer
2:	EasyCoder PX6i (300 dpi) - DP	=>	Backup Printer
3:		=>	
4:		=>	
5:		=>	
6:		=>	
7:		=>	
8:		=>	
9:		=>	

Buttons: Clear, Ok, Cancel

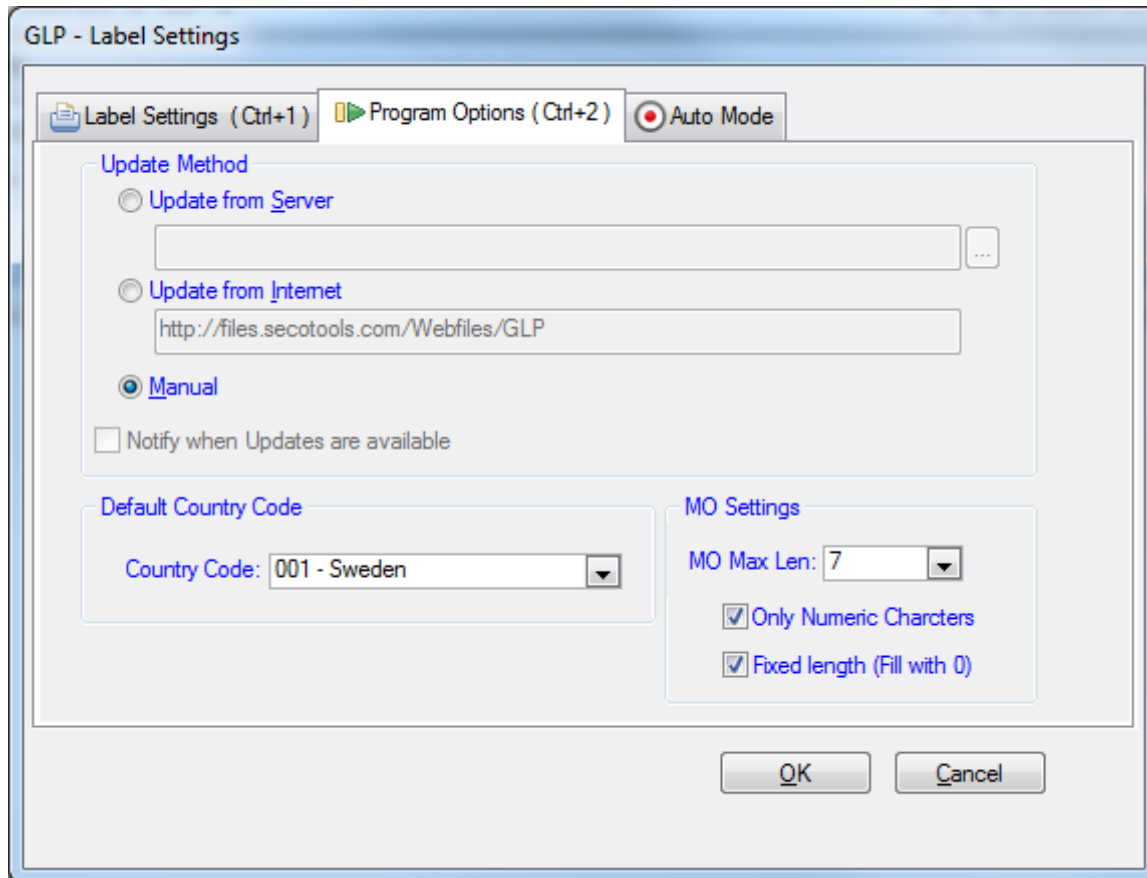
Then this new window opens, where you can choose up to nine different printers for the chosen label. You can also give the printer an Alias (optional) so that you more easily can separate the different printers.



When printing a label with multiple printers registered, you get to choose which of the printers you want to send the print to.

### 3.3 Program options

GLP can be configured for automatically checking of new versions.



#### 3.3.1 Update from Server

If you have multiple machines printing labels, or if connected to Seco Tools network, select this as the update method. Enter the path to where the master data and program files are stored.

#### 3.3.2 Update from Internet

Use this option if you don't have access to Seco Tools internal network.

#### 3.3.3 Manual

No version check is done, new files has to be placed manually in the program folder. This option should only be used when none of the two options above are possible. To update GLP manually see 5.2 Manual Update.

#### 3.3.4 Notify when Updates are available

Enable if you want GLP to check for updates automatically and notify when available (not possible when update set to Manual).

#### 3.3.5 Default County Code

Set the default country code (origin for manufacturer).

### 3.3.6 MO Settings

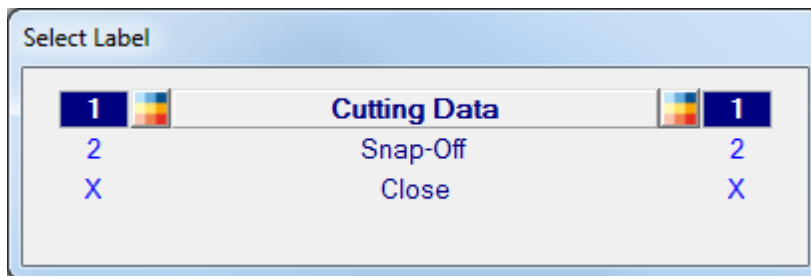
Set the maximum length (no of characters) of the MO field (default is 7).

When “Only Numeric Characters” is checked it means that only characters 0-9 are allowed in the MO field. It is checked by default.

When “Fixed length” is checked it means that the MO field will be filled with zero (0) so the length is always as the maximum length set. It is checked by default.

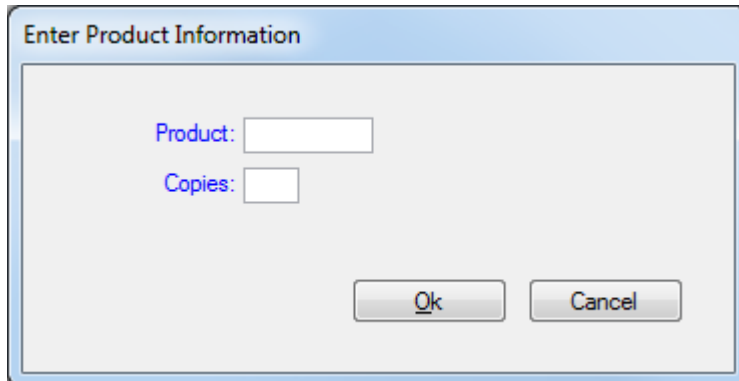
## 3.4 Printing Labels

After the setup is done, it is now possible to print the label(s). If the computer is allowed to print more than one label, the following screen appears



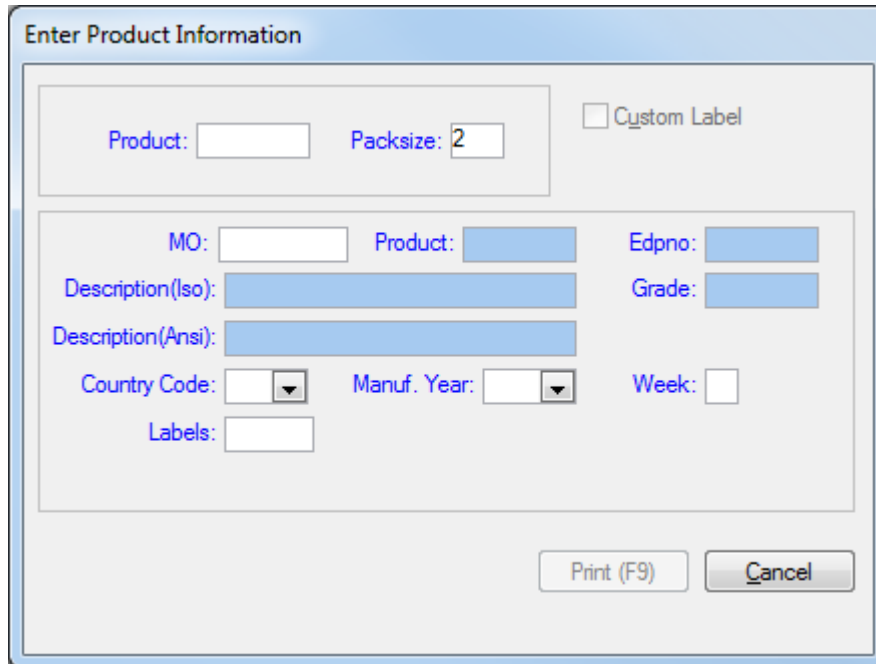
Here you select which label to print by double-clicking on the row, or pressing the corresponding number.

### 3.4.1 Cutting Data Label



Fill in the product number and copies, and then press ok

### 3.4.2 Snap-Off Label, Seco Tap Labels, Feedmax Universal Labels, Niagara Label & Drill Small Label



**Enter Product Information**

Product:  Packsize:   Custom Label

MO:  Product:  Edpno:

Description(Iso):  Grade:

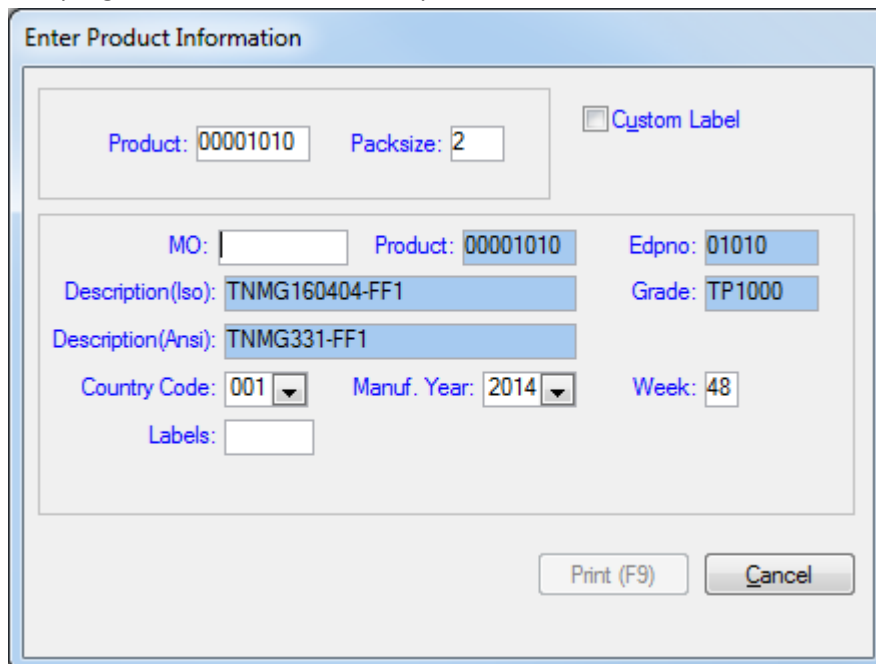
Description(Ansi):

Country Code:   Manuf. Year:   Week:

Labels:

Start by filling out the product number.

The program will fill in the correct product information



**Enter Product Information**

Product:  Packsize:   Custom Label

MO:  Product:  Edpno:

Description(Iso):  Grade:

Description(Ansi):

Country Code:   Manuf. Year:   Week:

Labels:

Type in the MO number and No of Labels.

Change Country Code, Manuf. Year and Week if needed.

### 3.4.3 Bin Label

The dialog box titled "Enter Label Range" contains the following elements:

- From:** Aisle (dropdown with blue highlight), Rack (empty), Shelf: (empty), Bin: (empty), Depth: (empty)
- To:** Rack (empty), Shelf: (empty), Bin: (empty), Depth: (empty)
- Manual Shelf:** An empty text input field.
- Number of labels:** 0
- Height options:**  Extended height,  Full height,  Half height
- Manual text:**  Manual text
- Buttons:** Ok, Cancel

Fill in the range of the bin labels to print

- Aisle 01-99
- Rack A-Z
- Shelf 01-99
- Bin A-Z
- Depth 01-09

The dialog box titled "Enter Label Range" is now populated with data:

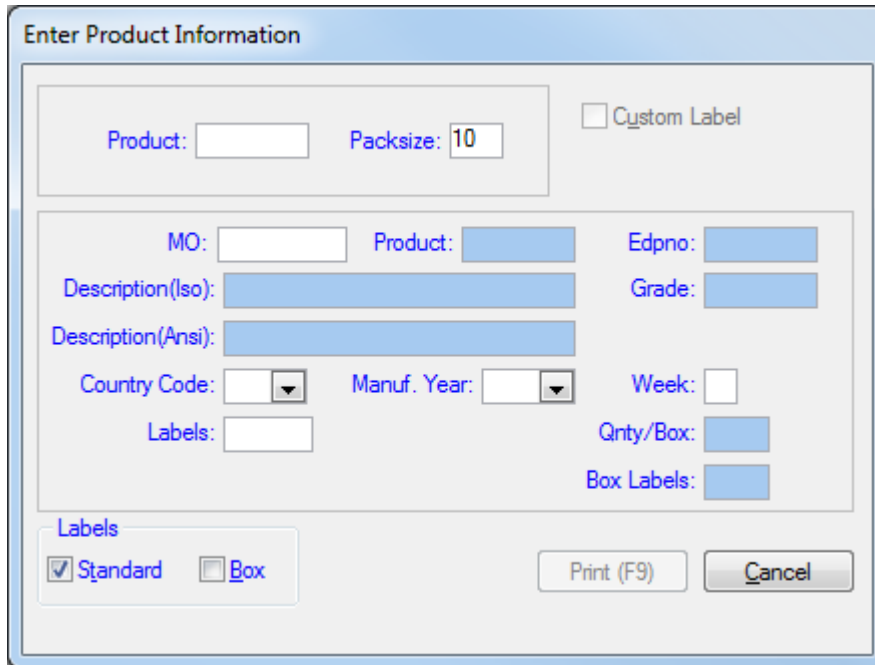
- From:** Aisle (02), Rack (A), Shelf: (01), Bin: (A), Depth: (01)
- To:** Rack (A), Shelf: (02), Bin: (D), Depth: (01) (with blue highlight)
- Manual Shelf:** An empty text input field.
- Number of labels:** 8
- Height options:**  Extended height,  Full height,  Half height
- Manual text:**  Manual text
- Buttons:** Ok, Cancel

When the data is entered, Number of labels to print is calculated and shown.

If manual text is desired, check the "Manual text" Box and type the text in "Manual Shelf".

Set if the label(s) should be printed as "Extended", "Full" or "Half" height, ("Half" is chosen as default).

### 3.4.4 Standard labels (Std, Tool, Drill), Milling Grade & Secolor



**Enter Product Information**

Product:  Packsize:   Custom Label

MO:  Product:  Edpno:

Description(Iso):  Grade:

Description(Ansi):

Country Code:   Manuf. Year:   Week:

Labels:  Qty/Box:

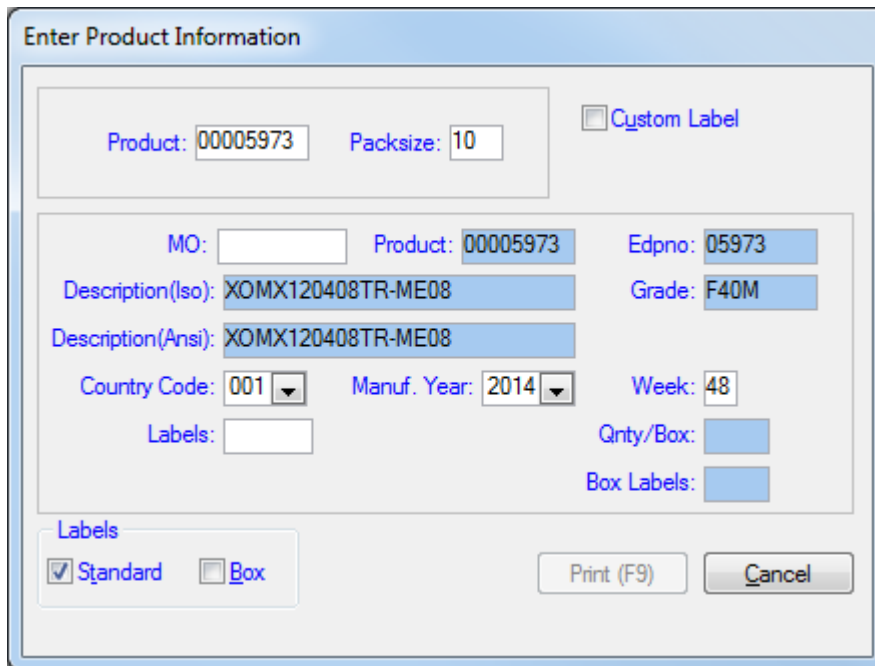
Box Labels:

Labels

Standard  Box

Print (F9) Cancel

Start by filling in the product number and press enter.



**Enter Product Information**

Product:  Packsize:   Custom Label

MO:  Product:  Edpno:

Description(Iso):  Grade:

Description(Ansi):

Country Code:   Manuf. Year:   Week:

Labels:  Qty/Box:

Box Labels:

Labels

Standard  Box

Print (F9) Cancel

Enter Manufacturing order number and number of labels to print.

If box labels needed, check the “Box” checkbox, fill in the box quantity and the number of box labels to print.

### 3.4.5 Box labels Seco Standard

Enter Product Information

Product: 00001028    Packsize: 10     Custom Label

**Wrong labeltype, only Boxlabel available**

MO: 1234567    Product: 00001028    Edpno: 01028  
Description(Iso): DNMG150604-M3    Grade: TP1000  
Description(Ansi): DNMG441-M3  
Country Code: 001    Manuf. Year: 2015    Week: 38  
Labels:    Qnty/Box: 1  
Box Labels: 1

Standard     Box

Print (F9)    Cancel

It is possible to print boxlabels on Seco Standard label even if the product is a Secolor or Secomill product. Then the window looks like above, only the Box option is available.

### 3.4.6 Custom Label

If a label with special text is needed, there is a possibility to “unlock” the fields with Description, EDP Number and Grade. To do this, type “00000000” as product number.

Enter Product Information

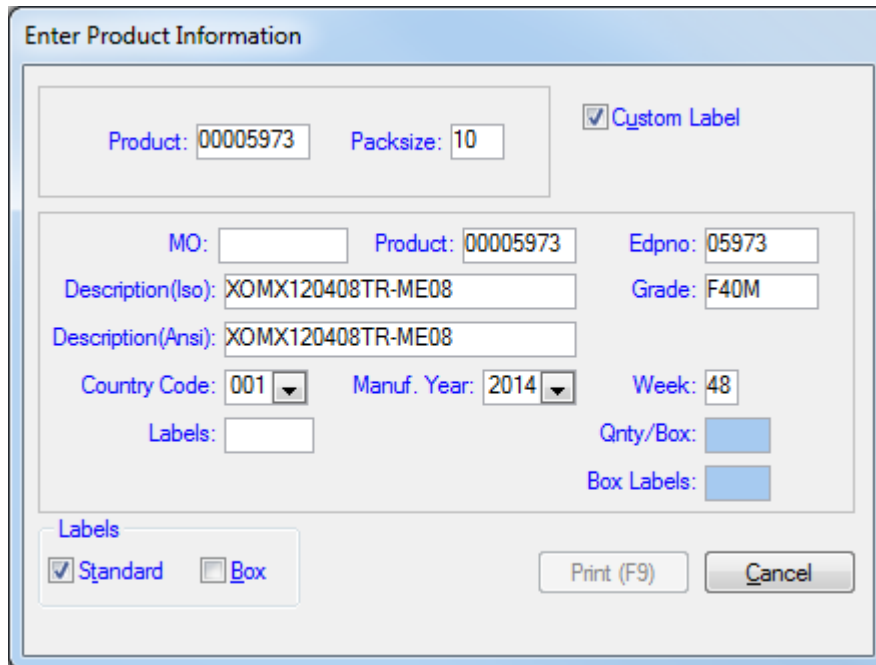
Product: 00000000    Packsize: 10     Custom Label

MO:    Product: 00000000    Edpno:     
Description(Iso):    Grade:     
Description(Ansi):     
Country Code:    Manuf. Year:    Week:     
Labels:    Qnty/Box:     
Box Labels:   

Standard     Box

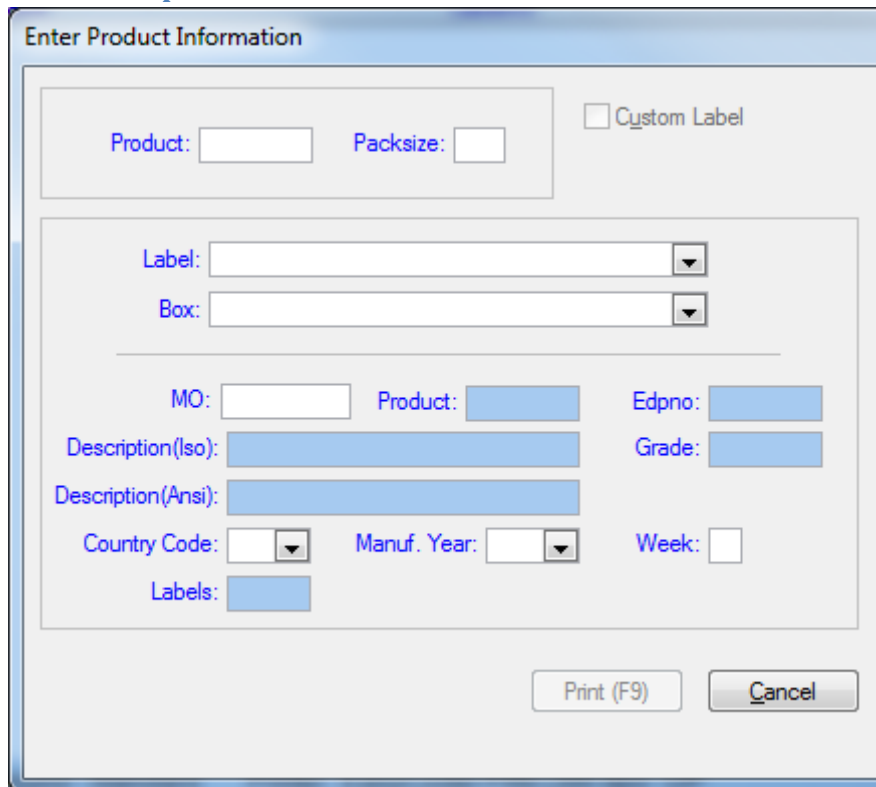
Print (F9)    Cancel

If some customer specific info is to be added, check the “Custom Label” box, and the fields are unlocked but the data remains.



The screenshot shows the 'Enter Product Information' dialog box. The 'Custom Label' checkbox is checked. The 'Product' field contains '00005973' and the 'Packsize' field contains '10'. Other fields include MO, Description(Iso), Description(Ansi), Country Code, Manuf. Year, Week, Edpno, Grade, Labels, Qty/Box, and Box Labels. The 'Standard' label checkbox is checked, and the 'Box' label checkbox is unchecked. Buttons for 'Print (F9)' and 'Cancel' are visible at the bottom.

### 3.4.7 Wraparound Labels



The screenshot shows the 'Enter Product Information' dialog box. The 'Custom Label' checkbox is unchecked. The 'Product' and 'Packsize' fields are empty. The 'Label' and 'Box' dropdown menus are visible. Other fields include MO, Product, Edpno, Description(Iso), Grade, Description(Ansi), Country Code, Manuf. Year, Week, and Labels. The 'Print (F9)' and 'Cancel' buttons are visible at the bottom.

When printing Wraparound Labels it's the same principle as with Standard labels (discussed in previous section).

The difference with Wraparound Labels is that you need to select a Label and matching Box.

**Enter Product Information**

Product: 00005973    Packsize: 10     Custom Label

Label: WRAPAROUNDLABEL6X3/NEUTRAL

Box: ASK701

MO:    Product: 00005973    Edpno: 05973

Description(Iso): XOMX120408TR-ME08    Grade: F40M

Description(Ansi): XOMX120408TR-ME08

Country Code: 001    Manuf. Year: 2014    Week: 48

Labels: 1

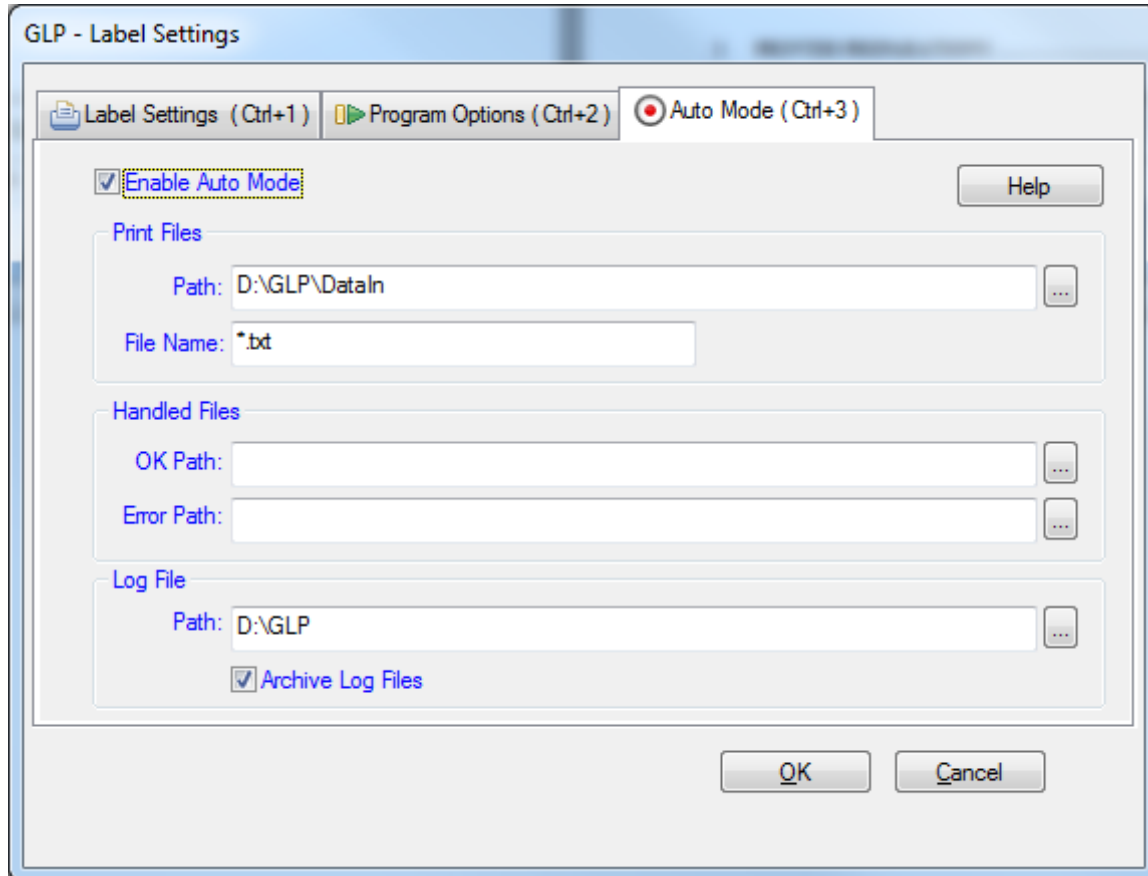
Print (F9)    Cancel

### 3.5 GLP Auto Mode

GLP Auto Mode is a feature that makes it possible for external systems to trigger label print via GLP. This is done by creating a Print File with required input data that GLP processes to create the wanted print. Below is described how to set up and use Auto Mode.

#### 3.5.1 Setting up Auto Mode

Label Settings and Program Options needs to be set up even if you only use GLP in Auto Mode. See 3.2 Label Settings and 3.3 Program Options.



*File>Options>Auto Mode*

To use Auto Mode it needs to be enabled and set up. Enable Auto Mode by checking the checkbox “Enable Auto Mode”. By doing so you will be able to make the other required settings.

##### 3.5.1.1 Print Files

In path, specify a path where GLP should search for the externally created Print Files that should generate a print in GLP. By default the path is set to [GLP install dir] + “\DataIn”. This path must be specified.

Also, it’s recommended to specify a File Name that tells GLP what files to look for. By default the File Name is set to “\*.txt”, meaning GLP will search for all txt-files. If GLP should process all files, regardless

of name and fileformat, type "\*. \*". Note that by using "\*. \*" GLP will process ALL files in the Pring Files path, meaning in needs to dedicated only for GLP Print Files.

The Print File is discussed in more detail under *3.5.2.1 Auto Mode Print File* in section *3.5.2 Using Auto Mode*.

### **3.5.1.2 Handled Files**

OK path is the path where GLP should place Print Files that have generated a print job that is OK, without errors. If left empty GLP will delete the Print File.

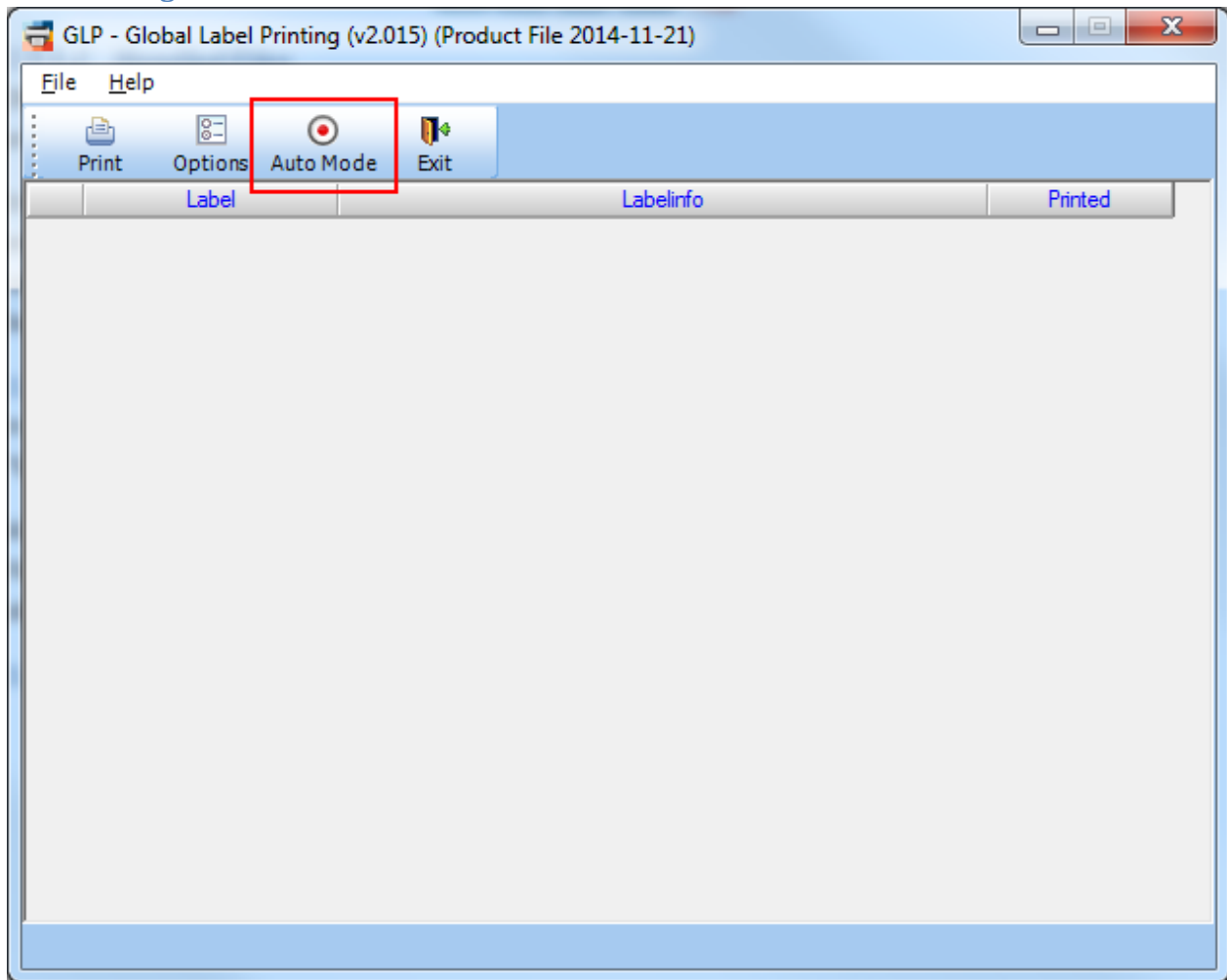
Error path is the path where GLP should place Print Files that have generated a print job with error. If left empty GLP will delete the Print File. Also, if a Error path is specified GLP will create a error message file containing the error that occurred. It will be placed in the same path and be named same as the Print File but with ".err" as file format.

### **3.5.1.3 Log File**

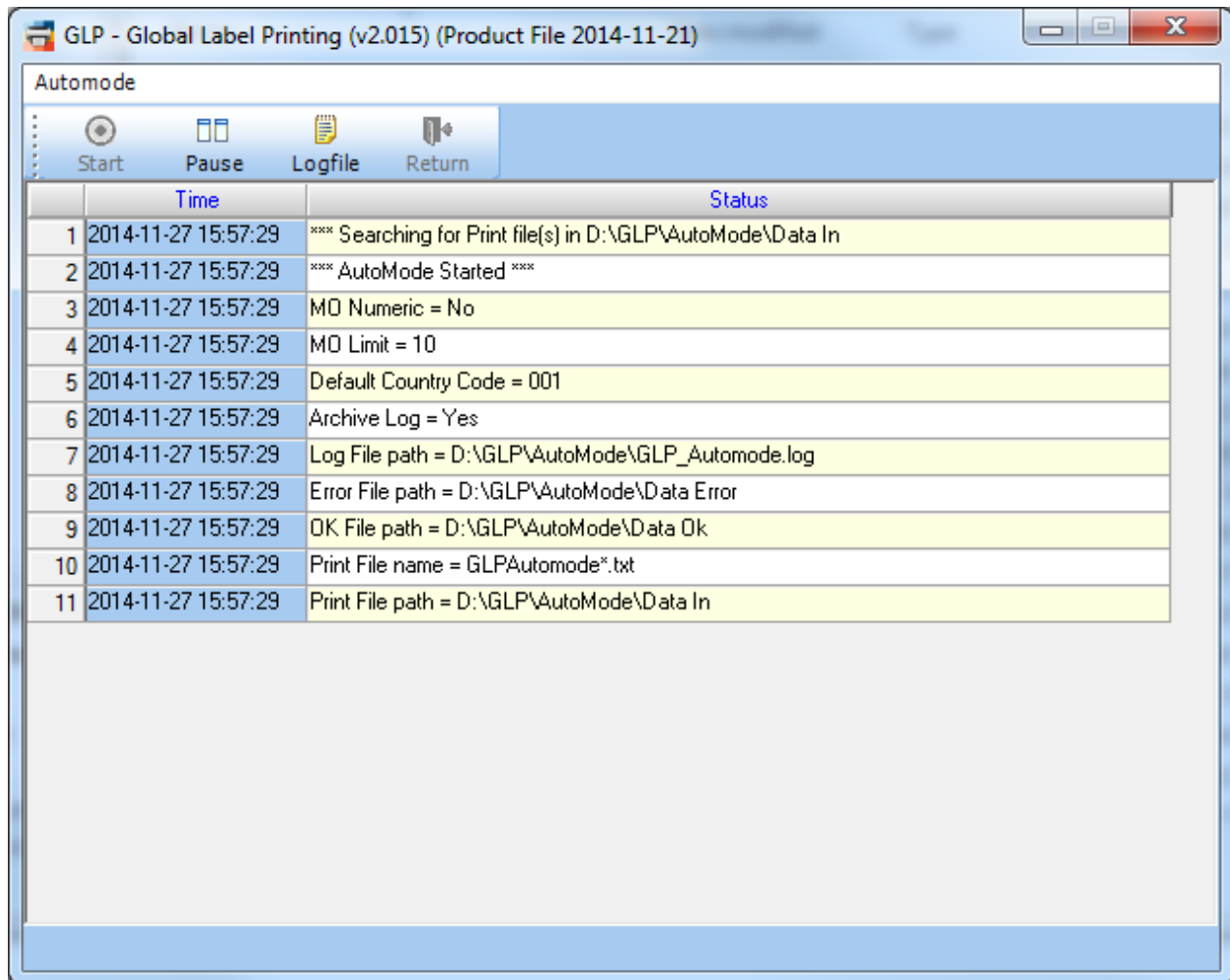
In path, specify a path where GLP should create it's log file. The file name for the Log file is "GLP\_AutoMode.log". By default the path is set to [GLP install dir]. This path must be specified.

Also, it's recommended to check the "Archive Log Files" checkbox. By doing so GLP will archive the Log File when it reaches 10MB in size. Archive is done in Log File path + "\Archive". If unchecked, the old Log File is deleted.

### 3.5.2 Using Auto Mode



When Auto Mode has been enabled, the Auto Mode icon is visible in the main window toolbar. Auto Mode is started by clicking this icon.



	Time	Status
1	2014-11-27 15:57:29	**** Searching for Print file(s) in D:\GLP\AutoMode\Data In
2	2014-11-27 15:57:29	**** AutoMode Started ****
3	2014-11-27 15:57:29	MO Numeric = No
4	2014-11-27 15:57:29	MO Limit = 10
5	2014-11-27 15:57:29	Default Country Code = 001
6	2014-11-27 15:57:29	Archive Log = Yes
7	2014-11-27 15:57:29	Log File path = D:\GLP\AutoMode\GLP_Automode.log
8	2014-11-27 15:57:29	Error File path = D:\GLP\AutoMode\Data Error
9	2014-11-27 15:57:29	OK File path = D:\GLP\AutoMode\Data Ok
10	2014-11-27 15:57:29	Print File name = GLPAutomode*.txt
11	2014-11-27 15:57:29	Print File path = D:\GLP\AutoMode\Data In

When entering Auto Mode the needed settings are read and checked to make sure they are they are set (logged above on rows 3-11). After that Auto Mode is activated and GLP starts searching for Print Files in the Print File path.

GLP - Global Label Printing (v2.015) (Product File 2014-11-21)

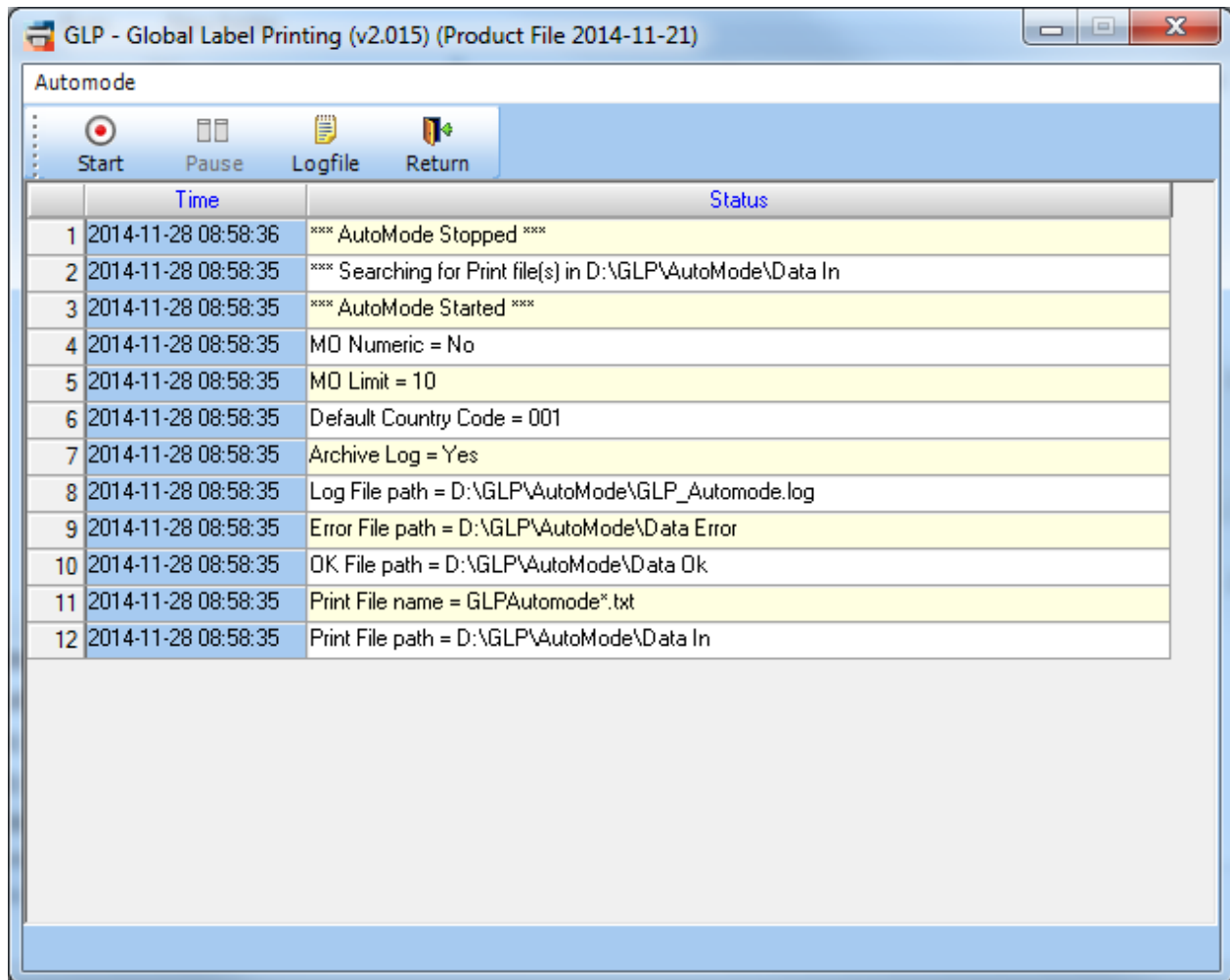
Automode

Start Pause Logfile Return

	Time	Status
1	2014-11-28 10:17:33	**** Searching for Print file(s) in D:\GLP\AutoMode\Data In
2	2014-11-28 10:17:33	**** Print Job Ended OK
3	2014-11-28 10:17:33	Print File GLPAutomode1.txt moved to D:\GLP\AutoMode\Data Ok
4	2014-11-28 10:17:33	Printing Label
5	2014-11-28 10:17:33	Loading Product Data
6	2014-11-28 10:17:31	Loading Label Data
7	2014-11-28 10:17:31	Reading file D:\GLP\AutoMode\Data In\GLPAutomode1.txt
8	2014-11-28 10:17:31	1 File(s) found
9	2014-11-28 10:17:31	**** Searching for Print file(s) in D:\GLP\AutoMode\Data In
10	2014-11-28 10:17:31	**** AutoMode Started ****
11	2014-11-28 10:17:31	MO Numeric = No
12	2014-11-28 10:17:31	MO Limit = 10
13	2014-11-28 10:17:31	Default Country Code = 001
14	2014-11-28 10:17:31	Archive Log = Yes
15	2014-11-28 10:17:31	Log File path = D:\GLP\AutoMode\GLP_Automode.log
16	2014-11-28 10:17:31	Error File path = D:\GLP\AutoMode\Data Error
17	2014-11-28 10:17:31	OK File path = D:\GLP\AutoMode\Data Ok
18	2014-11-28 10:17:31	Print File name = GLPAutomode*.txt
19	2014-11-28 10:17:31	Print File path = D:\GLP\AutoMode\Data In

Label: Seco Standard    Printer: EasyCoder PX6i (300 dpi) - DP

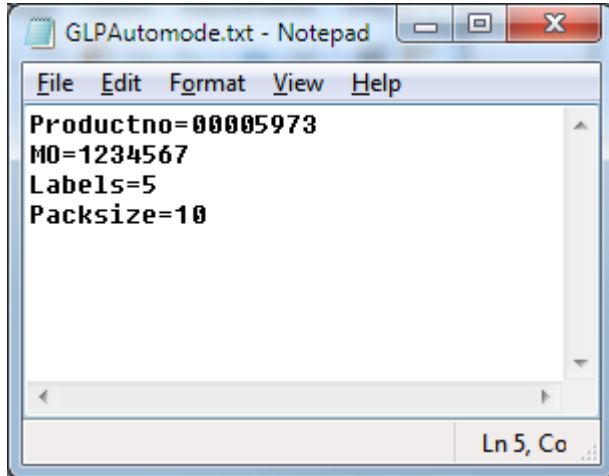
When a Print File is found, GLP starts processing it and initiates a print job. After the print job is completed, GLP searches for Print Files in the Print File path again.



To end the Auto Mode, press the Pause icon in the toolbar. Auto Mode can be restarted again by pressing the Start icon on the toolbar. When clicking the Return icon, the Auto Mode menu is closed and GLP will return to the main window.

### 3.5.2.1 Auto Mode Print File

The contents of the Print File must be arranged like in the screenshot below, meaning it should be [attribute]=[value]. It makes no difference in which order the attributes are written, but every attribute must be on a separate row in the file. See the next subsection for which attributes are needed in the Print File.



*Print File example (see section below to know what data you need to include)*

#### 3.5.2.1.1 Data in Print File

Below the different attributes that can be included in the Print File are described.

##### **Mandatory attributes (must always be included):**

- ProductNo - Unique Product number used for identifying which product to print
- MO - Manufacturing Order number, reference number for traceability

##### **Optional attributes (may be possible to exclude):**

- Labels - Number of Labels to print (set to 1 if not included)
- Packsize - Packed quantity, can be excluded if default Packsize is set in GLP settings
- Boxlabels - Number of Boxlabels to print (availability depending on label type)
- Boxsize - Packed quantity if Boxlabels are to be printed
- LabelProd - Product number for Label, include if automatic label not available
- BoxProd - Product number for Box, only applicable for Wraparound labels
- ManYear - Custom Manufacturing year, only include if not current year
- ManWeek - Custom Manufacturing week, only include if not current week
- CountryCode - Custom Country code, only include if not default Country code from GLP settings
- Printer - Custom Printer, not needed if printer set for label in GLP settings

## 4 Labels

Pictures of the Labels available in GLP.

### 4.1 Cutting Data

Label type = 1

*Label Image missing*

### 4.2 Snap Off

Label type = 2

#### 4.2.1 SNAPOFFLABEL43X23MM - 02451477



### 4.3 Bin

Label type = 3

*Label Image missing*

### 4.4 Seco Standard

Label type = 4

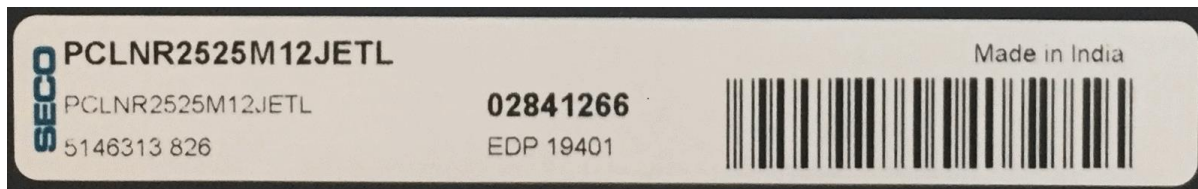
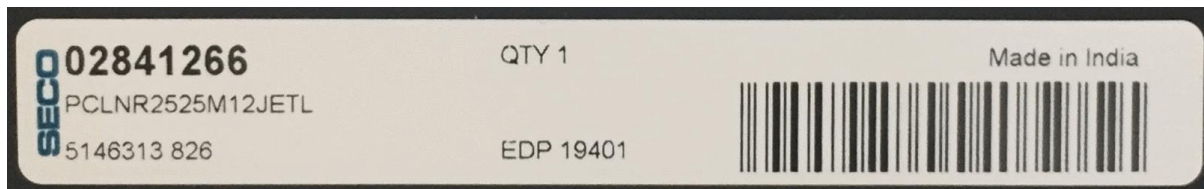
#### 4.4.1 SECOLABEL803/72X29MM - 02414744

Standard



**Box****4.5 Tool Label**

Label type = 5

**4.5.1 TOOLLABEL100X14MM - 02552518****Standard****Box****4.6 Milling Grade**

Label type = 6

**4.6.1 SECOMILLABEL82X29MM - 02563239****4.7 Drill**

Label type = 7

#### 4.7.1 DRILLLABEL43X23MM - 02531040

##### Standard



##### Box



#### 4.8 Secolor

Label type = 8

#### 4.8.1 SECOLORLABEL802/82X29MM - 02414745

##### Standard



#### 4.9 Snap Off (W)

Label type = 9

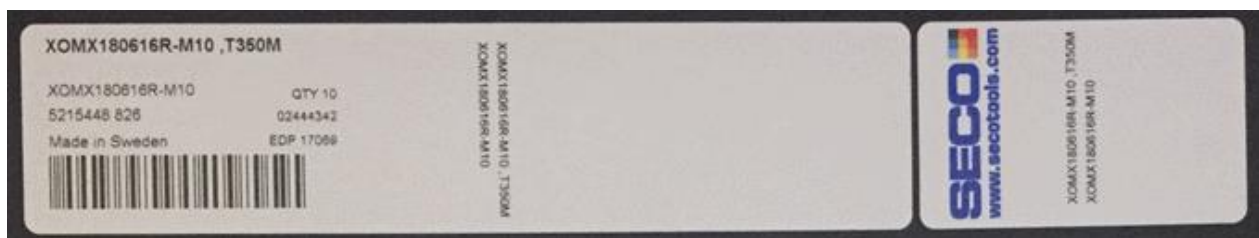
#### 4.9.1 CBNLABEL23X88MM - 02587479



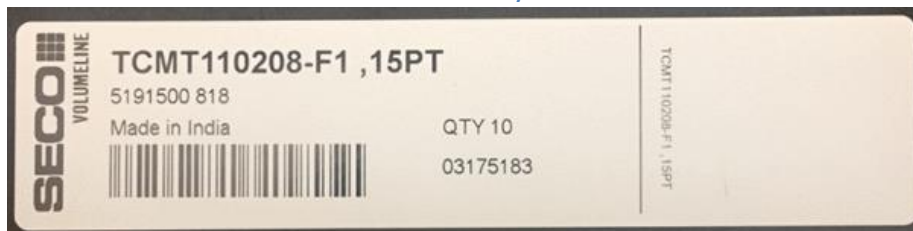
### 4.10 Wraparound Standard

Label type = A

#### 4.10.1 WRAPAROUNDLABEL6X3/NEUTRAL - 02667401



#### 4.10.2 WRAPAROUNDLABELONESIDE/NEUTRAL - 03181759



## 4.11 Wraparound Secolor

Label type = B

### 4.11.1 WRAPAROUNDLABEL6X3/SECOLOR - 02667402

<b>DNMG150608-M5 ,TP0501</b> DNMG442-M5 5215462 826 Made in Sweden 		QTY 10 02960511 EDP 16258	DNMG150608-M5 ,TP0501 DNMG442-M5	<table border="1"> <tr> <td rowspan="6"> <b>P</b> <b>M</b> <b>K</b> <b>N</b> <b>S</b> <b>H</b> </td> <td colspan="2">SMC</td> <td rowspan="6"> </td> </tr> <tr> <td>P5</td> <td>P7</td> <td></td> </tr> <tr> <td><math>a_p</math></td> <td>2,5</td> <td>2,5</td> <td>mm</td> </tr> <tr> <td></td> <td>0,1</td> <td>0,1</td> <td>in</td> </tr> <tr> <td><math>f</math></td> <td>0,3</td> <td>0,3</td> <td>mm/rev</td> </tr> <tr> <td></td> <td>0,012</td> <td>0,012</td> <td>in/rev</td> </tr> <tr> <td><math>v_c</math></td> <td>490</td> <td>520</td> <td>m/min</td> </tr> <tr> <td></td> <td>1625</td> <td>1700</td> <td>sf/min</td> </tr> </table>	<b>P</b> <b>M</b> <b>K</b> <b>N</b> <b>S</b> <b>H</b>	SMC			P5	P7		$a_p$	2,5	2,5	mm		0,1	0,1	in	$f$	0,3	0,3	mm/rev		0,012	0,012	in/rev	$v_c$	490	520	m/min		1625	1700	sf/min	 DNMG150608-M5 ,TP0501 DNMG442-M5 
<b>P</b> <b>M</b> <b>K</b> <b>N</b> <b>S</b> <b>H</b>	SMC																																			
	P5	P7																																		
	$a_p$	2,5		2,5		mm																														
		0,1		0,1		in																														
	$f$	0,3		0,3		mm/rev																														
		0,012		0,012	in/rev																															
$v_c$	490	520	m/min																																	
	1625	1700	sf/min																																	

<b>DNMG150608-M5 ,TP0501</b> DNMG442-M5 5215462 826 Made in Sweden 		QTY 10 02960511 EDP 16258	DNMG150608-M5 ,TP0501 DNMG442-M5	<table border="1"> <tr> <td rowspan="6"> <b>P</b> <b>M</b> <b>K</b> <b>N</b> <b>S</b> <b>H</b> </td> <td colspan="2">SMC</td> <td rowspan="6"> </td> </tr> <tr> <td>P5</td> <td>P7</td> <td></td> </tr> <tr> <td><math>a_p</math></td> <td>2,5</td> <td>2,5</td> <td>mm</td> </tr> <tr> <td></td> <td>0,1</td> <td>0,1</td> <td>in</td> </tr> <tr> <td><math>f</math></td> <td>0,3</td> <td>0,3</td> <td>mm/rev</td> </tr> <tr> <td></td> <td>0,012</td> <td>0,012</td> <td>in/rev</td> </tr> <tr> <td><math>v_c</math></td> <td>490</td> <td>520</td> <td>m/min</td> </tr> <tr> <td></td> <td>1625</td> <td>1700</td> <td>sf/min</td> </tr> </table>	<b>P</b> <b>M</b> <b>K</b> <b>N</b> <b>S</b> <b>H</b>	SMC			P5	P7		$a_p$	2,5	2,5	mm		0,1	0,1	in	$f$	0,3	0,3	mm/rev		0,012	0,012	in/rev	$v_c$	490	520	m/min		1625	1700	sf/min	 DNMG150608-M5 ,TP0501 DNMG442-M5 
<b>P</b> <b>M</b> <b>K</b> <b>N</b> <b>S</b> <b>H</b>	SMC																																			
	P5	P7																																		
	$a_p$	2,5		2,5		mm																														
		0,1		0,1		in																														
	$f$	0,3		0,3		mm/rev																														
		0,012		0,012	in/rev																															
$v_c$	490	520	m/min																																	
	1625	1700	sf/min																																	

<b>DNMG150608-M5 ,TP0501</b> DNMG442-M5 5215462 826 Made in Sweden 		QTY 10 02960511 EDP 16258	DNMG150608-M5 ,TP0501 DNMG442-M5	<table border="1"> <tr> <td rowspan="6"> <b>P</b> <b>M</b> <b>K</b> <b>N</b> <b>S</b> <b>H</b> </td> <td colspan="2">SMC</td> <td rowspan="6"> </td> </tr> <tr> <td>P5</td> <td>P7</td> <td></td> </tr> <tr> <td><math>a_p</math></td> <td>2,5</td> <td>2,5</td> <td>mm</td> </tr> <tr> <td></td> <td>0,1</td> <td>0,1</td> <td>in</td> </tr> <tr> <td><math>f</math></td> <td>0,3</td> <td>0,3</td> <td>mm/rev</td> </tr> <tr> <td></td> <td>0,012</td> <td>0,012</td> <td>in/rev</td> </tr> <tr> <td><math>v_c</math></td> <td>490</td> <td>520</td> <td>m/min</td> </tr> <tr> <td></td> <td>1625</td> <td>1700</td> <td>sf/min</td> </tr> </table>	<b>P</b> <b>M</b> <b>K</b> <b>N</b> <b>S</b> <b>H</b>	SMC			P5	P7		$a_p$	2,5	2,5	mm		0,1	0,1	in	$f$	0,3	0,3	mm/rev		0,012	0,012	in/rev	$v_c$	490	520	m/min		1625	1700	sf/min	 DNMG150608-M5 ,TP0501 DNMG442-M5 
<b>P</b> <b>M</b> <b>K</b> <b>N</b> <b>S</b> <b>H</b>	SMC																																			
	P5	P7																																		
	$a_p$	2,5		2,5		mm																														
		0,1		0,1		in																														
	$f$	0,3		0,3		mm/rev																														
		0,012		0,012	in/rev																															
$v_c$	490	520	m/min																																	
	1625	1700	sf/min																																	

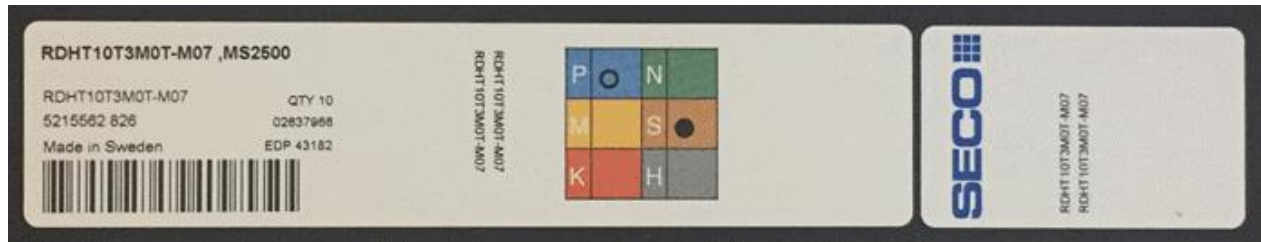
## 4.12 Wraparound Secomill

Label type = C

### 4.12.1 WRAPAROUNDLABEL6X3/SECOMILL - 02667403

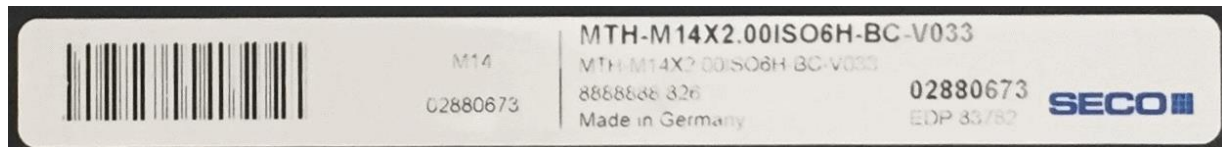
<b>RDHT10T3M0T-M07 ,MS2500</b> RDHT10T3M0T-M07 5215562 826 Made in Sweden 		QTY 10 02637966 EDP 43182	RDHT10T3M0T-M07 RDHT10T3M0T-M07	<table border="1"> <tr> <td rowspan="3"> <b>P</b> <b>M</b> <b>K</b> </td> <td> <b>N</b> <b>S</b> <b>H</b> </td> </tr> <tr> <td> </td> </tr> <tr> <td> </td> </tr> </table>	<b>P</b> <b>M</b> <b>K</b>	<b>N</b> <b>S</b> <b>H</b>			 RDHT10T3M0T-M07 RDHT10T3M0T-M07
<b>P</b> <b>M</b> <b>K</b>	<b>N</b> <b>S</b> <b>H</b>								

<b>RDHT10T3M0T-M07 ,MS2500</b> RDHT10T3M0T-M07 5215562 826 Made in Sweden 		QTY 10 02637966 EDP 43182	RDHT10T3M0T-M07 RDHT10T3M0T-M07	<table border="1"> <tr> <td rowspan="3"> <b>P</b> <b>M</b> <b>K</b> </td> <td> <b>N</b> <b>S</b> <b>H</b> </td> </tr> <tr> <td> </td> </tr> <tr> <td> </td> </tr> </table>	<b>P</b> <b>M</b> <b>K</b>	<b>N</b> <b>S</b> <b>H</b>			 RDHT10T3M0T-M07 RDHT10T3M0T-M07
<b>P</b> <b>M</b> <b>K</b>	<b>N</b> <b>S</b> <b>H</b>								

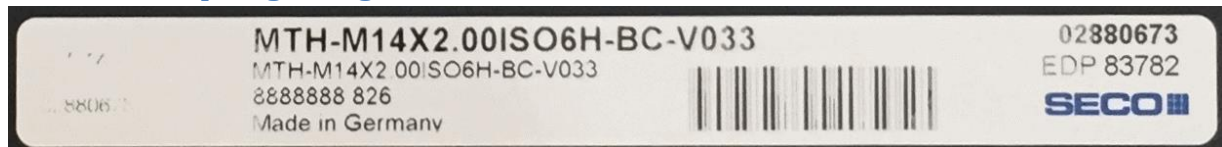


#### 4.13 SecoTap Single - 02892148

Label type = D



##### 4.13.1 SecoTap Single Large Size



#### 4.14 SecoTap 5-pack Small - 02892143

Label type = E



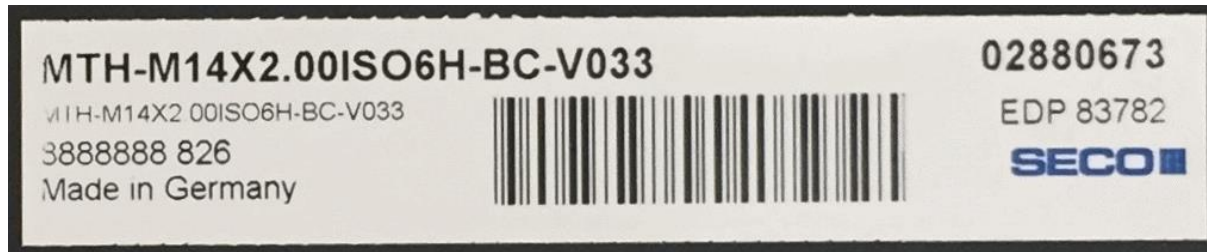
#### 4.15 SecoTap 5-pack Medium - 02892144

Label type = F



#### 4.16 SecoTap 5-pack Large - 02892146

Label type = G



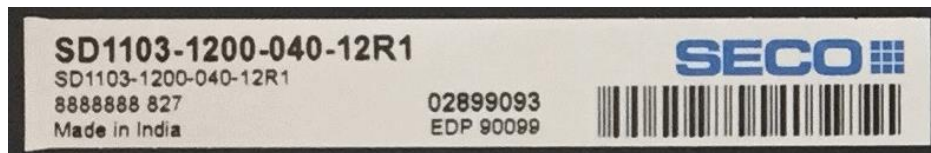
#### 4.17 Feedmax Universal Single - 02922405

Label type = H



#### 4.18 Feedmax Universal Small - 02922406

Label type = I



#### 4.19 Feedmax Universal Medium - 02922407

Label type = J



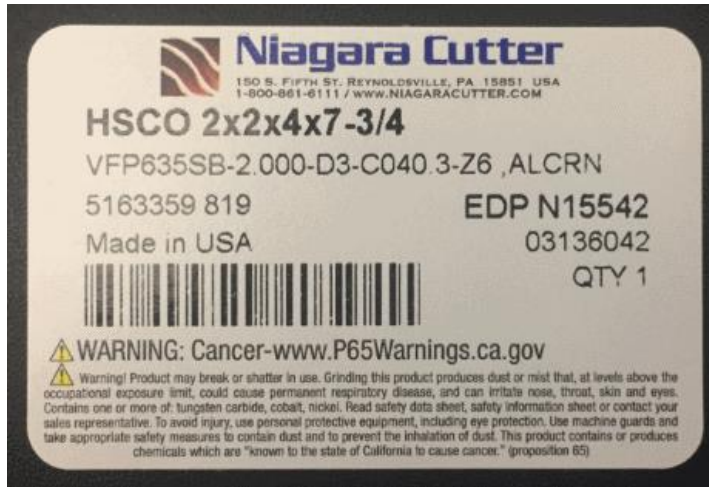
#### 4.20 Feedmax Universal Large - 02922410

Label type = K



## 4.21 Niagara

Label type = L



## 4.22 Drill Small

Label type = M



## 4.23 Tool Small

Label type = O



## 4.24 Tool Large

Label type = N



#### 4.25 Jabro

Label type = Q



#### 4.26 Free Text

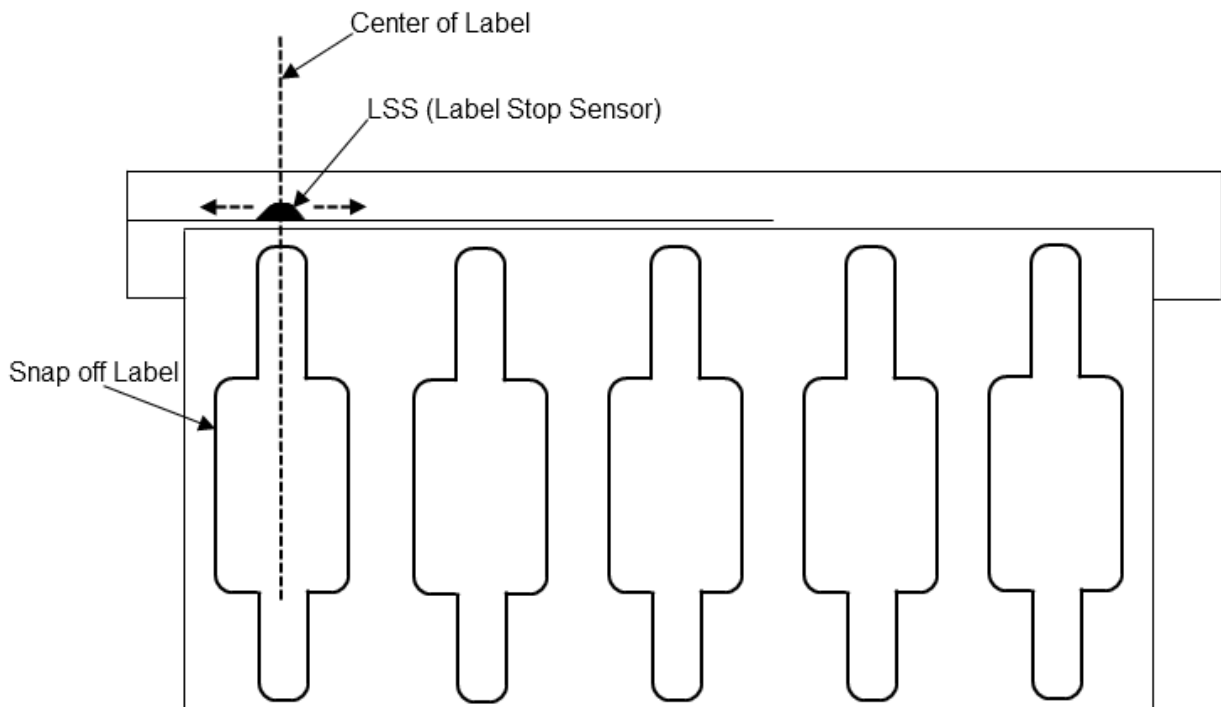
Label Type = R

## 5 Troubleshooting

### 5.1 Label is shifted vertically

If the printout seems to be shifted vertically it could be because of the Label Stop Sensor (LSS). It is very important that the LSS is configured correctly. To configure it, do the following:

1. Adjust the sensor so that the center of the sensor is in the center of the first label from the left. It is very important that it's really in the center of the label so please pay attention to this and adjust it as close to the center of the label as possible.
2. On the printer press and hold *Shift* and then press *Feed* to calibrate the new position of the sensor.



*Label Stop Sensor set correctly (in this example for Snap off label).*

### 5.2 Manual Update

If product data is missing in GLP it's probably because the product data files have not been updated. If neither Server or Internet update (see 3.3 Program Options) are possible, then GLP needs to manually updated. To update GLP manually do the following steps:

1. Close down your GLP application if open.
2. Download: [http://files.secotools.com/webfiles/glp/manual\\_upd/manual\\_upd.zip](http://files.secotools.com/webfiles/glp/manual_upd/manual_upd.zip)
3. Unzip the files into your local GLP installation folder. Replace all files.

## 6 Version Changes

<b>1.14</b>	2019-09-23	Free Text label added
<b>1.13</b>	2018-07-04	Label pictures updated, Jabro label added
<b>1.12</b>	2018-06-26	New labels Tool Small & Tool Large added
<b>1.11</b>	2016-08-16	In "2.1.1 Stock" label dimensions in Inches have been added
<b>1.10</b>	2015-12-09	"3.2.1 Multiple printers" is new "3.4.5 Box labels Seco Standard" is new "3.5 GLP Auto Mode" has been updated
<b>1.09</b>	2014-12-04	New feature "3.5 GLP Auto Mode" New Label Drill Small GLP screenshots updated
<b>1.08</b>	2013-11-28	New Label Niagara
<b>1.07</b>	2013-10-14	Feedmax Universal, new labels added under "2 Printing Preferences"
<b>1.06</b>	2013-09-16	"5.2 Manual Update" is new Seco Tap, new labels added under "2 Printing Preferences"
<b>1.05</b>	2013-06-18	"3.3.6 MO Settings" is new
<b>1.04</b>	2013-05-14	"3.2 Label Settings" has been updated with Default Packsize.
<b>1.03</b>	2013-03-14	"3 Global Label Printing" screen shots updated
<b>1.02</b>	2012-10-29	"4 Labels" is new
<b>1.01</b>	2012-09-04	"2 Printing Preferences" screen shots updated "3 Global Label Printing" screen shots updated "3.3.4 Notify when Updates are available" is new
<b>1.00</b>	2012-01-12	New